

WELCOME & LOGISTICS



- Logistics and Agenda Review
- Introduction of new Maternal Health Unit Manager, Manal Said



Maternal Infant Health Program Coordinator Training
September 2015
AGENDA



WELCOME TO THE 2015 SEPTEMBER COORDINATOR TRAINING

Manal M. Said, MSW

Manager, Maternal Health Unit

Michigan Department of Health and Human Services





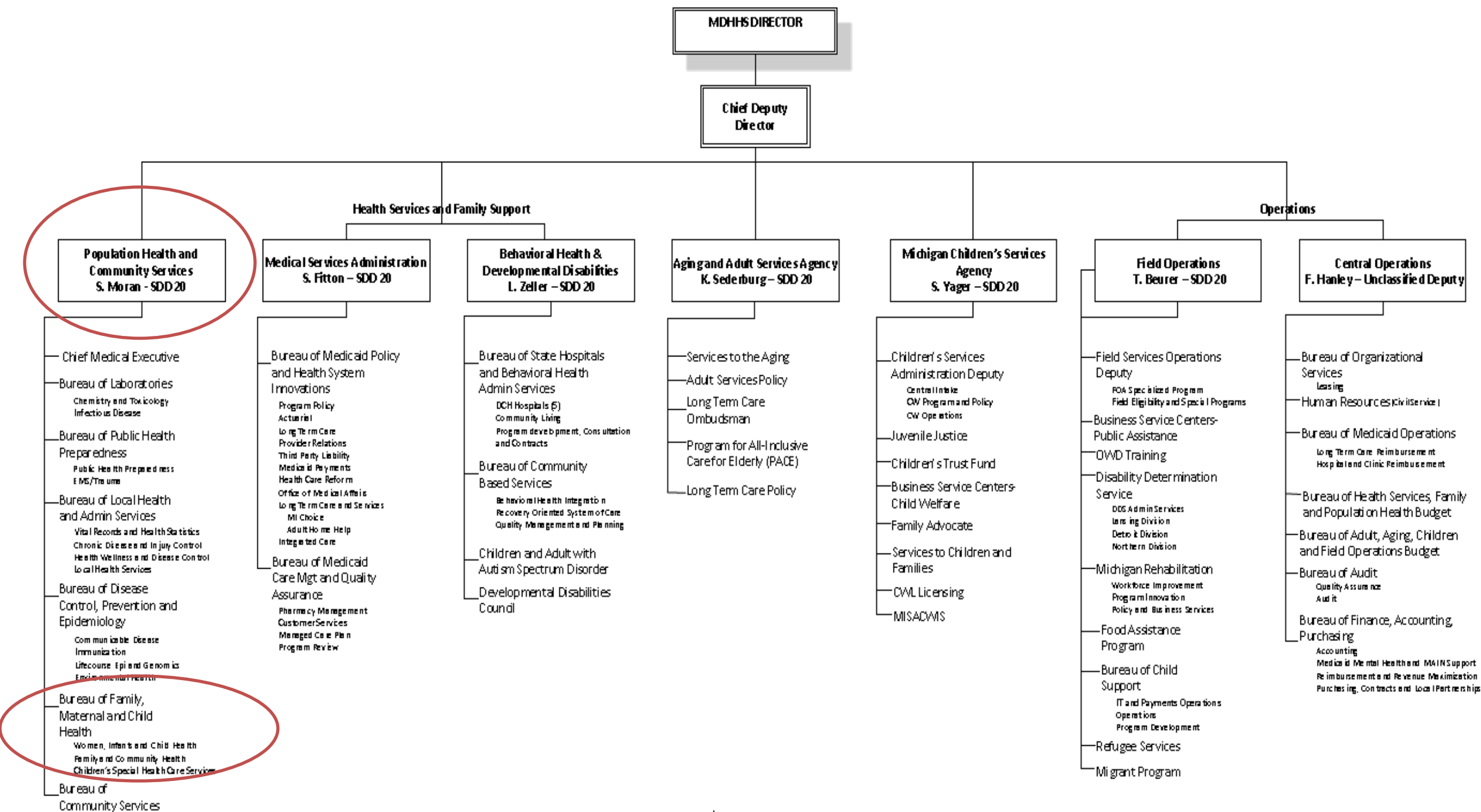
A few quick updates...



- MDHS & MDCH Merger in April
 - Michigan Department of Health and Human Services (MDHHS) Nick Lyon Director
- Population Health & Community Services- Sue Moran
- Bureau of Family, Maternal & Child Health
 - Division of Family & Community Health
 - Women and Maternal Health Section
- Maternal Health Unit
 - Maternal Infant Health Program (MIHP)
 - Fetal Alcohol Spectrum Disorder (FASD)
 - Maternal Mortality & Morbidity (MMMS)
- State Infant Mortality Reduction Plan- update [IMAC]



Michigan's Infant Mortality Reduction Plan



BUREAU OF FAMILY, MATERNAL AND CHILD HEALTH

08500
BUREAADM05N
R. Travis-SBA 18
3901ADMB28

827

**08540
DIVISION OF FAMILY AND COMMUNITY HEALTH**

STDIVADM36N
B. Fink-SDA 17
3901DIRA25

846

EXCSECE03N
M. Mayes-Exec. Sec. E

857

**08542
WOMEN, INFANT AND FAMILY**

STDDADM1B16N
P. Dunbar-SAM 1
3901ADMA49
SECRTYAA88R
D. Hennessey-Sec. A

856

**08540
DIVISION SUPPORT**

DEPSPL2F28N
L. Taylor-Dept. Spec. 2
DPTLTCHAC09R
C. Crawford-Dept. Tech. A

856

**08550
School & ADOLESCENT
HEALTH SECTION**

STADDADM1H74N
C. Tarry-SAM 1
3901ADMB75
SECRTYAA89R
D. Clark-Sec. A

856

**08551
EARLY CHILDHOOD
HEALTH SECTION**

STDDADM1L44N
N. Peeler-SAM 1
3901ADMC20

**08548
PERINATAL HEALTH**

PUBHMGR2A14N
R. Asman-Pub. Hlth Cons. Mgr. 2
3901MGRB81
SECRTYEA82R
C. Livingston-Sec E
NURCST2AA01R
T. Esch-Nurse Cons. 2A
NURCST2AA03R
D. Kimball-Nurse Cons. 2A
PBHLCSTAA07R
I. Davis-Pub. Hlth Cons. A
PBHLCSTAA26R
J. Detwiler-Pub. Hlth Cons. A
PBHLCSTAA44R
Manal Said-Pub. Hlth. Cons 2A
DEPTALTAQ18N
C. Frantz-Dept. Anl. A
PBHLCSTAA65R
C. Ross Jordan - Pub Hlth Cons A

857

859

**08543
REPRODUCTIVE HEALTH**

PUBHMGR2A06N
Vacant-Mgr. 2
3901MGRA71
SECRTYEA85R
J. Stiles-Sec. E

857

**08544
FAMILY PLANNING**

NURCSTA2AA11R
Vacant-Nurse Cons. 2A
PBHLCSTAA04R
D. McMillan-Pub. Hlth Cons. A
PBHLCSTAA24R
D. Charest-Pub. Hlth Cons. A
PBHLCSTAA27R
B. Derman-Pub. Hlth Cons. A
NURSCSTAA03R
A. Booncharoen-Nurse Cons. A
DEPTALTA81N
R. Wilkins-Dept. Anl. A
DEPTALTAM41N
S. Utter-Dept. Anl. A

858

**08545
PLAN FIRST**

PBHCST2AA41R
R. Orsborn-Pub. Hlth Cons. 2A
DEPTALTAQ18N
Vacant-Dept. Anl. A

858

**08557
ADOLESCENT AND SCHOOL
HEALTH**

PUBHMGR2A16N
Vacant-Pub. Hlth Cons. Mgr 2
3901MGRB83
SECRTYEN64N
T. Walker-Sec E
PBHLCST2AA25R
K. Yoder-Pub. Hlth Cons. 2A
PBHCST2AA36R
S. Hines-Pub. Hlth. Cons. 2A
PBHCST2AA34R
T. Doll-Pub. Hlth Cons. 2A
PBHCST2AA03R
Vacant-Pub Hlth Cons 2A
PBHLCSTAA54R
M. Twichell-Pub. Hlth Cons A
PBHLCSTAA68R
R. Corey-Pub Hlth Cons A
PBHLCSTAA64R
H. Turner-Pub Hlth Cons A
PBHLCSTAA70R
K. Anderson-Pub. Hlth. Cons. A

860

861

**08556
ORAL HEALTH UNIT**

PUBHMGR2A17N
C. Farrell-Pub Hlth Cons Mgr 2
3901MGRC01
PBHLCSTEA38R
Vacant-Pub Hlth Cons E
DEPTALTAS82N
S. Deming-Dept. Anl. A
DEPTALTER19N
J. Moore-Dept. Anl. E
PBHCST2AA16R
J. Dakers-Pub. Hlth Cons. 2A
PBHLCSTAA57R

861

**08552
CHILDREN'S HEALTH**

PUBHMGR2A01N
N. Peeler-Pub. Hlth Cons. Mgr 2
3901MGRA23
SECRTYEA83R
E. Lounds-Sec. E

860

**08554
CHILDREN'S HEALTH
SUPPORT**

PBHLCSTAA61R
T. Kostelec-Pub Hlth Cons A
NURSCSTAA31R
Vacant-Nurse Cons. A

861

**08553
POISONING PREVENTION**

NURCST2AA02R
Vacant-Nurse Cons. 2A
NURSCSTAA33R
Vacant-Nurse Cons. A
NURSCSTAA04R
Vacant-Nurse Cons. A
DEPSPL2G24N
R. Scott-Dept. Spec. 2

861

WOMEN AND MATERNAL HEALTH SECTION

Paulette Dobyns Dunbar, Section Manager
Diane Hennessey, Section Secretary

HEALTH EQUITY AND PERINATAL SYSTEMS

Health Disparities Reduction—Maternal Child Health (MCH)
Brenda Jegele

Infant Mortality Reduction

Manal Said
Vacant-Epi

Perinatal Care System

Trudy Esch
Dawn Shanahan
Joyce Stein, FTE 0.5

Medicaid Outreach
Local Maternal Child Health (LMCH)
Robin Orsbom

REPRODUCTIVE AND PRECONCEPTION HEALTH UNIT

Deanna Charest, Unit Manager
Judy Stiles, Unit Secretary

Family Planning

Darin McMillan
Barbara (Ques) Derman, FTE 0.5
Vacant, Nurse Consultant
Vacant, Public Health Consultant
Stephen Utter
Aurea Booncharoen, FTE 0.9
Rosemary Wilkins, FTE 0.8
Deb Hallenbeck-Auditor Mgr, FTE 0.15
Keith Rubley-Auditor, FTE 0.5
Vacant-Auditor, FTE 0.5
Patricia McKane-Epi Mgr, FTE 0.125
Vacant-Epi, FTE 0.5

Breastfeeding Initiative
Gayle Shipp

Prenatal Smoking Cessation
Aurea Booncharoen, FTE 0.1

Pre-Interconception Health
Barbara (Ques) Derman, FTE 0.5

PRAMS (Pregnancy Risk Assessment Monitoring System)
Epi, FTE 0.35
Pete Haak, Epi Coord, Analyst, FTE 0.35

MCH Analysis
Rosemary Wilkins, FTE 0.2

MATERNAL HEALTH UNIT

Vacant, Unit Manager
Christy Livingston, Unit Secretary

Maternal Infant Health Program (MIHP)
David Davis
Joni Mueller
Connie Frantz
Maria Garcia
Deb Maronick
Cherie Ross-Jordan
Suzette Burkitt-Wesolek
Brittany Franklin, Student Asst, FTE 0.3

Perinatal Oral Health
Emily Carr
Susan Deming, FTE 0.25

Fetal Alcohol Spectrum Disorder (FASD)
Michigan Maternal Mortality Surveillance (MMMS)
Debra Kimball
Vacant-Maternal Health-Epi, FTE 0.33
Brittany Franklin, Student Asst, FTE 0.3

EARLY CHILDHOOD HEALTH SECTION

Nancy Peeler, Section Manager
Vacant, Section Secretary

EARLY CHILDHOOD SYSTEMS UNIT

Vacant, Unit Manager

Childhood Lead Poisoning Prevention Prg (CLPPP)

Robert Scott
Karen Ushinski
Jessica Cooper
Javier Howard, FTE 0.625
Cristin Larder-Epi, FTE 0.2

Trauma Informed System (ECCS)
Mary Mueller, FTE 0.5

Public Health and Early-On
Tiffany Kostealec, FTE 0.4

Race to the Top
Vacant, PHC A/2A
Vacant, Dept Spec (BFMCH)

INFANT HEALTH UNIT

Jeffrey Spitzley, Unit Manager
Lisa Bonucki, Unit Secretary

Early Hearing Detection and Intervention (EHDI)

Debra Behringer
Mancy Asher
Erin Estrada
Michelle Garcia
Karen Wisinski
Evelyn Quarshie-Epi, FTE 0.5
Justine Bryant, Student Asst

Safe Sleep
Vacant-Epi, FTE 0.16

Fetal Infant Mortality Review (FIMR)
Sudden Unexplained Infant Death (SUID)
Infant Death Prevention and Bereavement
Infant Death Autopsy Support

Cassandra McNulty
Vacant-Epi, FTE 0.17

Safe Delivery

HOME VISITING UNIT

Vacant, Unit Manager
Elizabeth Lounds, Unit Secretary

MI ECHV (Maternal Infant Early Childhood Home
Visitation Initiative)

Cynthia Zagar
Tiffany Kostealec, FTE 0.6
Emily Houk, FTE 0.5
Cristin Larder-Epi, FTE 0.8
Vacant, Outreach PHC E
Vacant, Dept Anal A
Vacant, Auditor, FTE 0.5

Nurse-Family Partnership (NFP)
Rosemary Fournier

Other Evidence-Based Home Visiting Models
Vacant, PHC 2A

Healthy Families America
Vacant, PHC 2A

CHILD, ADOLESCENT AND SCHOOL HEALTH SECTION

Carrie Tarry, Section Manager
Dianne Clark, Section Secretary
Sarah Rockhill, Epidemiologist

CHILD AND ADOLESCENT HEALTH SYSTEMS

Maternal Child Health (MCH) Block Grant

Vacant, PHC 2A

Maternal Child Health State Innovation Model (MCH-SIM)

Vacant, PHC 12, FTE 0.75

MI Adolescent Pregnancy & Parenting Teen Program (MI-APP)

Hilary Turner
Christopher Robinson, FTE 0.2
Shannon Lester, Student Intern

Trauma Informed Care (ECCS)
Mary Mueller, FTE 0.5

CHILD AND ADOLESCENT HEALTH CENTERS UNIT

Vacant, Unit Manager
Tylen Walker, Unit Secretary, FTE 0.5

School-Based Integrated Health Centers

Taggart Doll
Michelle Twichell
Kristin Hirsch
Shani Saxon

Adolescent Mental Health Initiative
Lauren Kazee, FTE 0.5 (MDE FTE 0.5)
Vacant-Teen Suicide Prevention-Epi, FTE 0.3

School Nursing
Linda Meeder, FTE 0.5 (MDE FTE 0.5)

Teen Pregnancy Prevention Initiative (TPPI)

Taking Pride in Prevention (TPIP)
Kara Anderson
MI Abstinence Program (MAP)
Robyn Corey

SCHOOL HEALTH UNIT

Vacant, Unit Manager
Tylen Walker, Unit Secretary, FTE 0.5

Coordinated School Health
Karen Krabill-Yoder

Hearing Screening Program
Jennifer Dakers

Vision Screening Program
Rachel Schumann

MI Model for Health
Sophia Hines
Jessica Shaffer

Reorg
DRAFT



New Positions

- MIHP Consultant posting almost up: <https://www.mphi.org/careers/>
- MIHP Reviewer- inform via Coordinator e-mail
- Breastfeeding Coordinator position SOM
- Infant Mortality Coordinator position SOM
- Reproductive Health Consultant SOM
- Communications Coordinator [HV & IM] TBA
- NFP Consultant TBA

<http://agency.governmentjobs.com/michigan/default.cfm>





Creating **Healthy People, Healthy Communities** through HV

They're off and running...



Welcome new agencies!

