

Webinar



Maternal Infant Health Program (MIHP)

February 18, 2016



AGENDA

Welcome

Opening Remarks

MIHP Updates

Lead Presentation

Medicaid Services Administration Updates

Keynote: Health Equity Presentation

Q and A

Closing Remarks



Staff Introductions



*"Thank you
for being a
part of our team."*



Ingrid Davis
Consultant



Ingrid and Chris



Young Ingrid

*Joni Detwiler
Consultant*



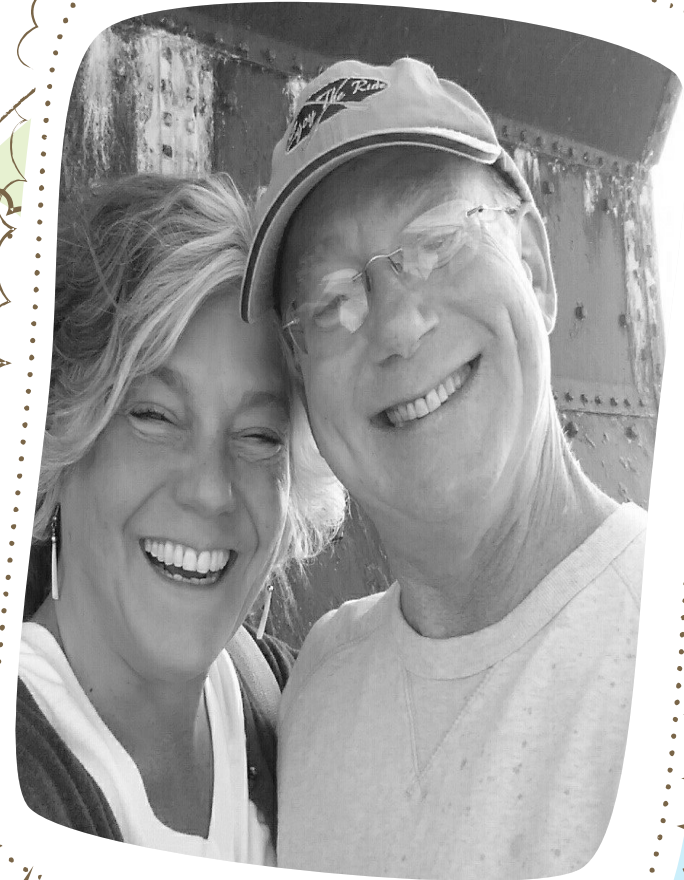
Joni Detwiler & young Thomas



Beekeepers!

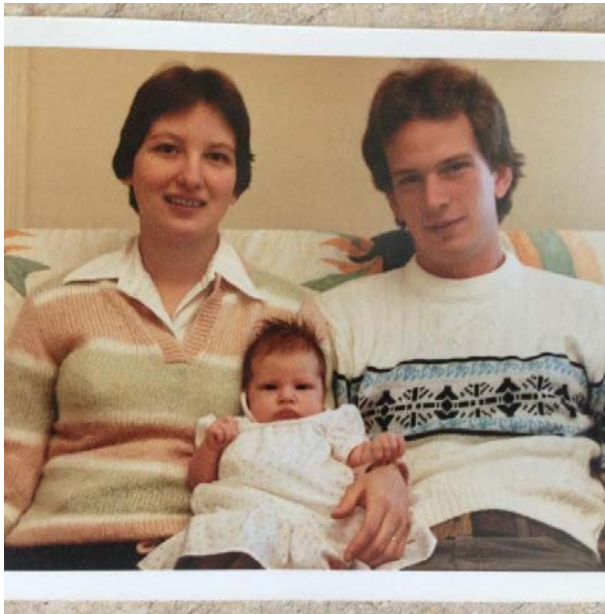


Taking care of business at an early age!



Joni & Marty

Suzette Burkitt-Wesolek
QI Coordinator



Suzette, Chuck & Marie



Mini me, Suzette!



Suzette Burkitt-Wesolek & Son Nick



Sarah, Lily, & Grammy

*Cherie Ross
Consultant*



Newborn
Cherie

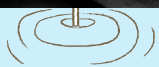
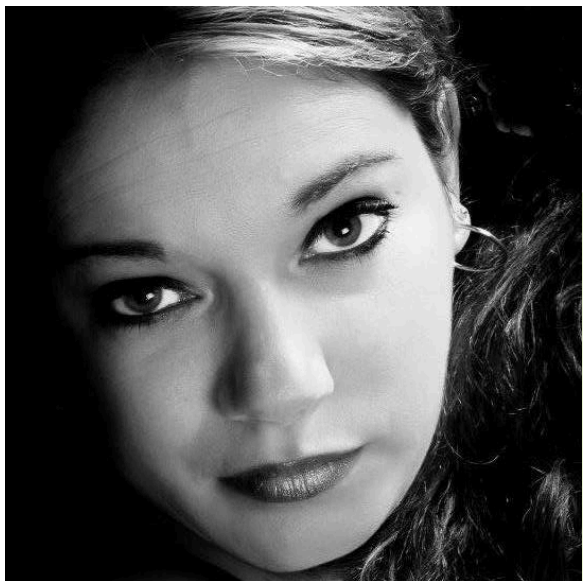


College Graduation



Princess Cherie

*Christy Livingston
Administrative Assistant*



Ellana, Christy and Alexis



Christy



Christy & Alexis

Connie Frantz
Departmental Analyst



Manal Said, Manager

Oldest Son

Godbaby Auden



My Babies



Mom and I



Niece and I



Deb Marciniak
QA Coordinator



Lisa Dilernia
MSA



Dawn Gove
IT Analyst



Rama P.
QA Analyst



Maria Garcia
Unit Tech



MDHHS

MATERNAL INFANT HEALTH PROGRAM UPDATES



MIHP Position Updates

- Interviews scheduled or in process for the following positions:
 - MIHP Consultant
 - MIHP Reviewer
 - MIHP Student Assistant
 - Breastfeeding Coordinator
 - Infant Mortality Coordinator

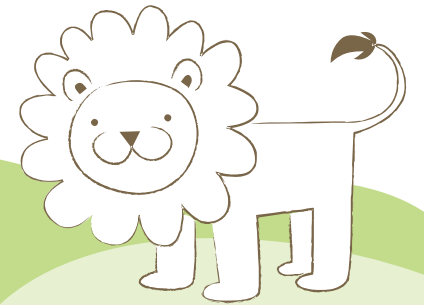


Medicaid Health Plan Updates

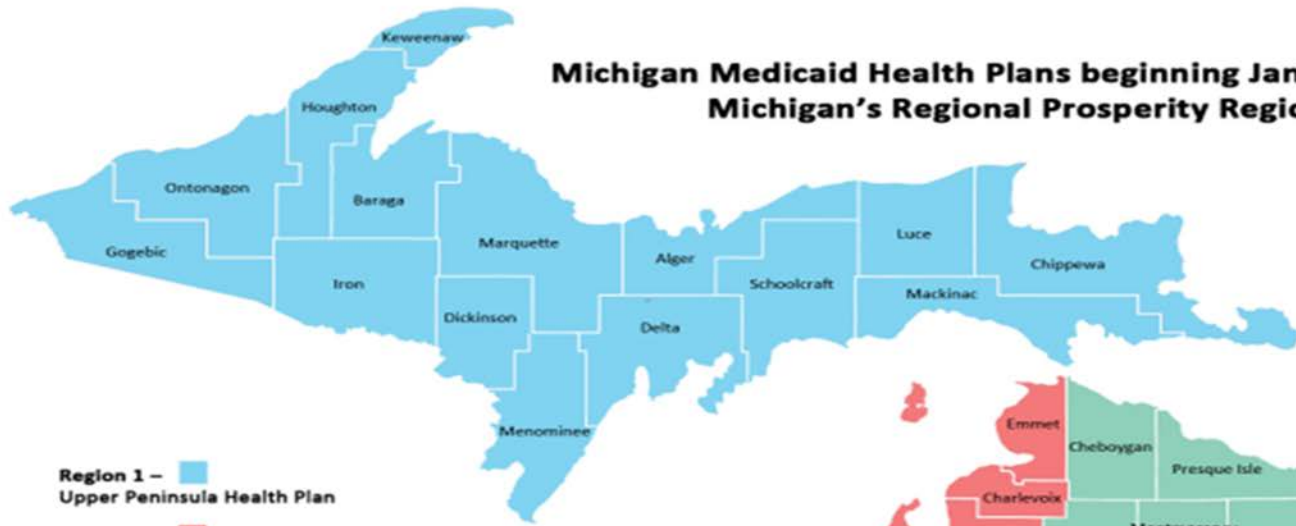
- Coordinator agreements are still required
- New agreements must be obtained for new health plans
- MIHP Transition effective 10.1.16
- Additional communication will be made available to all MIHP providers as more information becomes available

To view a map of the recommended health plans listed by prosperity region, visit:

www.michigan.gov/documents/mdhhs/MHP_Counties_Map_502832_7.pdf



Michigan Medicaid Health Plans beginning January 1, 2016 Michigan's Regional Prosperity Regions



Region 1 –  Upper Peninsula Health Plan

Region 2 –  McLaren Health Plan, Meridian Health Plan of Michigan, Molina Healthcare of Michigan, UnitedHealthcare Community Plan

Region 3 –  McLaren Health Plan, Meridian Health Plan of Michigan, Molina Healthcare of Michigan, UnitedHealthcare Community Plan

Region 4 –  Blue Cross Complete of Michigan, McLaren Health Plan, Meridian Health Plan of Michigan, Molina Healthcare of Michigan, Priority Health Choice, UnitedHealthcare Community Plan

Region 5 –  McLaren Health Plan, Meridian Health Plan of Michigan, Molina Healthcare of Michigan, UnitedHealthcare Community Plan

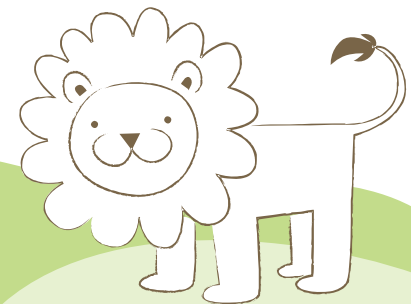
Region 6 –  Blue Cross Complete of Michigan, HAP Midwest Health Plan, McLaren Health Plan, Meridian Health Plan of Michigan, Molina Healthcare of Michigan, UnitedHealthcare Community Plan

Region 7 –  Blue Cross Complete of Michigan, McLaren Health Plan, Meridian Health Plan of Michigan, Molina Healthcare of Michigan

Region 8 –  Aetna Better Health of Michigan, McLaren Health Plan, Meridian Health Plan of Michigan, Molina Healthcare of Michigan, Priority Health Choice, UnitedHealthcare Community Plan

Region 9 –  Aetna Better Health of Michigan, Blue Cross Complete of Michigan, McLaren Health Plan, Meridian Health Plan of Michigan, Molina Healthcare of Michigan, UnitedHealthcare Community Plan

Region 10 –  Aetna Better Health of Michigan, Blue Cross Complete of Michigan, Harbor Health Plan, McLaren Health Plan, Meridian Health Plan of Michigan, Molina Healthcare of Michigan, Total Health Care, UnitedHealthcare Community Plan



Michigan Medicaid Health Plans

- Region 1 – Upper Peninsula Health Plan
- Region 2 – McLaren Health Plan, Meridian Health Plan of Michigan, Molina, Healthcare of Michigan, UnitedHealthcare Community Plan
- Region 3 – McLaren Health Plan, Meridian Health Plan of Michigan, Molina, Healthcare of Michigan, UnitedHealthcare Community Plan
- Region 4 – Blue Cross Complete of Michigan, McLaren Health Plan, Meridian Health Plan of Michigan, Molina Healthcare of Michigan, Priority Health Choice, UnitedHealthcare Community Plan
- Region 5 – McLaren Health Plan, Meridian Health Plan of Michigan, Molina Healthcare of Michigan, UnitedHealthcare Community Plan
- Region 6 – Blue Cross Complete of Michigan, HAP Midwest Health Plan, McLaren Health Plan, Meridian Health Plan of Michigan, Molina Healthcare of Michigan, UnitedHealthcare Community Plan

Michigan Medicaid Health Plans cont.

- Region 7 – Blue Cross Complete of Michigan, McLaren Health Plan, Molina Healthcare of Michigan, UnitedHealthcare Community Plan
- Region 8 – Aetna Better Health of Michigan, McLaren Health Plan, Meridian Health Plan of Michigan, Molina Healthcare of Michigan, Priority Health Choice, UnitedHealthcare Community Plan
- Region 9 – Aetna Better Health of Michigan, Blue Cross Complete of Michigan, McLaren Health Plan, Meridian Health Plan of Michigan, Molina Healthcare of Michigan, UnitedHealthcare Community Plan
- Region 10 – Aetna Better Health of Michigan, Blue Cross Complete of Michigan, Harbor Health Plan, McLaren Health Plan, Meridian Health Plan of Michigan, Molina Healthcare of Michigan, Total Health Care, UnitedHealthcare Community Plan



CHAMPS Contact Information

CHAMPS Billing Questions & Assistance

Send an email to:

Providersupport@Michigan.gov

Subject line: Attn: Craig Boyce
MIHP Billing Question

Provide a description in the body of the email.



Coordinator Directory Secondary Contact Information

To ensure timely MDHHS communication

- Additional method of contact for the agency
- May or may not be another staff person
- At a minimum: include a secondary email
 - Preferably both an email and secondary phone number



Consent to Participate & Authorization to Share Protected Health Information Forms

- To minimize confusion and eliminate errors when completing consents;
Consents revised 11/1/15 in response to MIHP Providers feedback
- The forms were separated for maternal and infant beneficiaries
- A new authorization and consent to release PHI needs to be completed each time a risk identifier is done
- Please note: the consent to transfer (402) is not maternal or infant specific and is used for both maternal and infant beneficiaries.



Ages & Stages Questionnaire (ASQ) 3

Ages & Stages Social Emotional Questionnaire (SE) 2

- MDHHS has mailed agencies whose names begin with A-R the ASQ: SE 2, User Guide for the ASQ: 3 and a Learning Activity book.
- There has been a delay in agencies S-Z receiving their shipment due to unforeseen reasons. Additional materials have been ordered for these agencies and will be distributed as soon as possible.
- Materials were mailed to the current MIHP agency address listed on our current MIHP Coordinator Directory.



Ages & Stages Questionnaire (ASQ) 3

Ages & Stages Social Emotional Questionnaire (SE) 2

- The ASQ: SE 2 now has tools that begin at two months of age.
- The tool also age adjusts unlike the previous version. Please see the MIHP Operation's Guide for further information regarding implementation.
- You are not required to begin using the updated ASQ: SE 2 until Cycle 6 certification begins; however, you “may” begin using the new tools as soon as you receive them providing you follow the implementation instructions.

Reminders!

- MIHP providers may continue to submit questions related to regional coordinating meeting to their state consultants.
- To help us improve quality and ensure efficiency, it is critical to respond timely to any correspondence received from the MDHHS-MIHP state office. Please let your consultant know if you are experiencing difficulties receiving correspondence.
- The personnel roster is currently in the process of being revised.
- If you experience technical difficulties or have questions, please continue to contact your consultant.



IT Information



Date Issues

If agencies are encountering records in the MIHP application with “Missing Medicaid ID” for Infant or Mom, indicate if a Mom or Infant Medicaid ID needs to be added to the system and submit the following information to your consultant via fax:

- Beneficiary Full Name
- Beneficiary Date of Birth
- Beneficiary Medicaid ID

If agencies are encountering prompts in the MIHP application that more than one record exists in the system for Mom or Infant Demographic Records, submit the following information to your consultant via fax:

- Beneficiary Full Name
- Beneficiary Date of Birth
- Beneficiary Medicaid ID

Certification Tool

- Anticipated effective date 5.1.16
- Ongoing focus on
 - health equity
 - continuous quality improvement
 - quality assurance
 - model fidelity
 - standardized care coordination
 - quality service provision
 - serving specialty populations
 - Statewide MIHP coverage



MIHP Certification Data

November 1, 2014 – December 15, 2015

- Total Certification Reviews Done 129
- Total Full Certifications 88
- Total Conditional Certification Status 33
- Total Decertified Agencies 8
- Review with **Zero** “Not Mets” 4
 - Caring and Sharing Family Life Services
 - Ionia County Health Department
 - Sparrow MIHP
 - District Health Department #2

Fantastic Work!

Cycle 5 Certification Data *November 1, 2014 – December 15, 2015*

- Most Commonly Missed **Non-Critical** Indicator
#3 Signed Consents
 - 76 Not Mets or 65% of agencies reviewed
- Most Commonly Missed **Critical** Indicator
#56 Discharge Summaries Accurate and Complete
 - 78 Not Mets or 67% of agencies reviewed



Top 10 “Not Met” Indicators November 1, 2014 – December 31, 2015

Criteria Description	Number of agencies receiving a “not-met”	Percent of agencies receiving a “not-met”
Discharge Summary completed and sent to medical care provider	78	67%
Signed consents	76	65%
Developmental screening for all infant beneficiaries using ASQ-3 and ASQ: SE	56	48%
Professional visits to implement beneficiary’s Plan of Care	51	44%
Plan of Care (Parts 1-3)	50	43%
Sufficiently detailed clinical record*	46	39%
Medical care provider notified within 14 days of beneficiary enrollment	40	34%
Care coordination	23	20%
Use of standardized forms	19	16%
Care Coordination Agreements with Medicaid Health Plans	19	16%

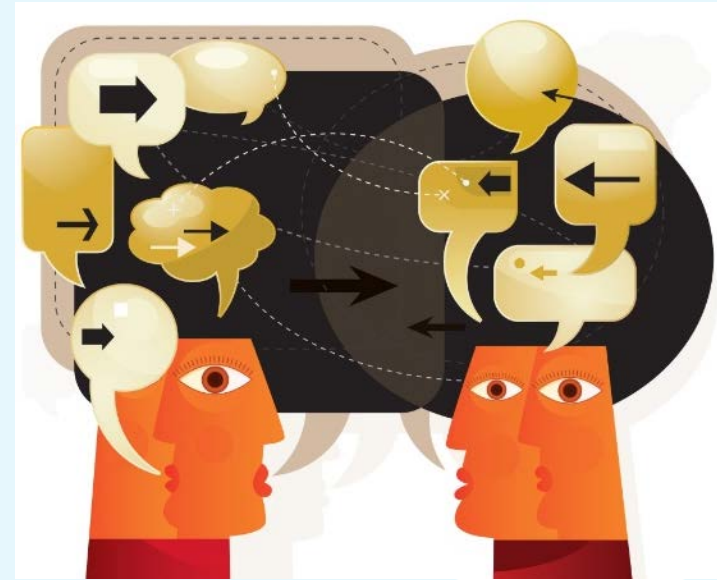
N=121 Full and Conditional Agency Certifications

Reflective Supervision

Thank you to those individuals and agencies who responded to the reflective supervision survey distributed in late 2015.

The mental health workgroup will be discussing possibilities for expanded reflective supervision opportunities with the Michigan Association for Infant Mental Health (MI-AIMH).

More information will be shared as details become available.



Practices to Reduce Infant Mortality through Equity (PRIME)

W.K. Kellogg Foundation funded project to enhance the capacity of the Michigan Department of Health and Human Services (MDHHS) Bureau of Family, Maternal & Child Health (BFMCH) to reduce racial disparities in infant mortality between Blacks and Whites and between American Indians and Whites in Michigan.

The primary goal of PRIME was to create a comprehensive strategy to reduce racial disparities in infant mortality in the state of Michigan.

Trainings and workshops are held to build staff capacity to address health disparities and promote health equity with focus on raising awareness of racism and discrimination, educating staff on the root causes of social and health inequalities and encouraging ongoing dialogue

For more information about the PRIME initiative, visit the website @ <http://prime.mihealth.org/>

Practices to Reduce Infant Mortality through Equity (PRIME)

-The Health Equity Learning Lab Series is designed to assist MDHHS, Bureau of Family & Maternal and Child Health staff incorporate equity thinking and action into their day-to-day work.

The Learning Labs seek to answer the question:

What can I do from my desk, my office, my job, my organization, to change social determinants of health equity as they affect the women, infants and children in the program in which I work?

The Goals are:

1. To foster institutional change to develop policies and procedures that always promote, and NEVER inhibit health equity
2. To incorporate equity thinking, perspectives and action into daily work assignments and responsibilities

-**MIHP Area of focus:** Promote engagement and participation of MIHP fathers, males and partners in home visitation

Objectives:

1. Assess current strategies and approaches utilized by MIHP providers
2. Develop survey and distribute electronically using Survey Monkey
3. Gather and analyze feedback by June 2016
4. Recommendations will be disseminated to MIHP providers statewide during the June 2016 Coordinator Trainings

MDHHS-Health Equity Learning and Social Justice Learning Lab

Action Steps Taken:

1. The MIHP Team developed a Survey using Survey Monkey using a Likert scale.
2. The survey was e-mailed with the registration link for the February 2016 MIHP Training.
3. Additional research and literature reviews were conducted
 - Several books, national models, and articles reviewed (on-going)
 - Attendance at Fatherhood conferences (on-going)
 - Previous examples of statewide successful inclusion methods
4. Start with MIHP and expand to other HV services and other programs within the bureau
5. Collaborate with the Child and Adolescent Health Center currently working on similar efforts
6. State Infant Mortality Reduction Plan priority



Upcoming Trainings



IMH Statewide Meeting: Engaging Fathers

March 10 from 9:00 am - 4:00 pm



- **Boys to Men: Challenges on the Risk to Resilience Continuum**
- **Where is Daddy?" Engaging and Maintaining Relationships with Fathers When Working with Infants and Children.**
- **CE's:** Pending approval for 5.5 Michigan SW CEU's and will also count toward the requirements for the MI-AIMH endorsement.
- **Registration:** \$80.00 for non-members, \$65.00 for MI-AIMH members, \$35.00 for students, \$10.00 for CEUS.
- **Registration deadline:** 3/4/16
- mi-aimh.org/event/imh-statewide-committee-meeting/



MDHHS Breastfeeding Summit March & April 2016



- MDHHS will be hosting two Breastfeeding Summits
 - “Working to Bridge the Gap” which will focus on removing barriers to breastfeeding for Michigan families
 - The first Summit will be held March 15th in Lansing
 - The second will take place in Marquette on April 19th
 - Registration information was sent in Coordinator email #4 on Jan. 22, 2016
- Attendance is limited and agencies were offered space for one person from each MIHP agency on a first come first serve basis
 - A total of 20 MIHP openings were available for Lansing and 10 openings for Marquette
 - **Limited space still available, contact Joni at detwilerj@michigan.gov to reserve a space.**

Save the date.....

*2016 Michigan Home Visiting Conference: Partners in Progress
Detroit Marriott at the Renaissance Center*

Wed Aug 3	Preconference MIHP Model Day - Time TBD	
Thurs Aug 4	9:00am to 6:00pm	Conference Day
Fri Aug 5	9:00am to 2:30pm	Conference Day

Registration Fee (covers all 3 days) - TBD

Registration materials will be available in May.

Room block is now available!



Home Visiting Conference Session Proposals

The Michigan Home Visiting Conference Planning Committee is currently accepting proposals for the 4th Annual Michigan Home Visiting Conference on August 4 - 5, 2016 at the Detroit Marriott Center.

The 2016 conference is intended for home visitors, administrators, supervisors and parents in Michigan's home visiting programs. The theme of this year's conference is **Partners in Progress**.

Focus areas are: Leadership, Overall Service Provision, Continuous Quality Improvement, Supervision, Trauma (i.e. Toxic Stress), Challenging Issues (i.e. Domestic Violence, Substance Abuse, Maternal Depression), Self-Care, Working Alongside Parents, Outreach and Enrollment, Child Development/Screening, and Community Referral and Coordination.

Submissions are due by 4:00 pm on Friday, March 4, 2016. The conference planning committee will review all submissions and presenters will be notified regarding the status of their submission by March 25, 2016.

To learn more about how to submit and to access the on-line form, please visit:

<https://events.mphi.org/michiganhomevisitingconference>

Please contact Heather Woods at hwoods@mphi.org or at 517-324-6091, if you have questions.

In Person MIHP Training – June 2016



Tuesday, June 7, 2016
Four Points by Sheraton in Kalamazoo



Tuesday, June 14, 2016
Crystal Mountain in Thompsonville



Thursday, June 9, 2016
Inn at St. Johns in Plymouth

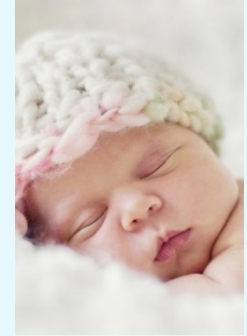


Thursday, June 16, 2016
Landmark Inn in Marquette

Registration Now Open! Visit <https://events.mphi.org/maternal-infant-health-program> to register.

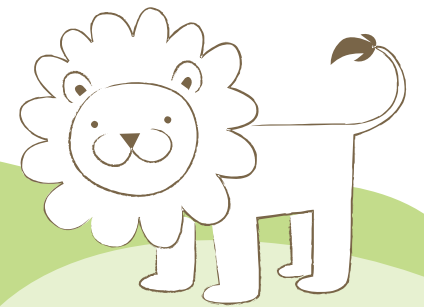
Positive Practices Poster Display

- Posters displayed during June 2016 MIHP Coordinator meetings
- Creative and promising practices that have enhanced your program examples include how to engage new clients, retain clients, outreach
- Posters selected by the planning committee will be notified by April 29, 2016
- Displays will be designed and printed by MPHI and will travel to all four June 2016 MIHP training sites
- For more information or to access the application: events.mphi.org and click on the Maternal Infant Health Program Tab



*2016 Regional
Coordinator Trainings
'Positive Practices' Registration
Deadline: Friday, April 15th, 2016*

Resources



Trauma Informed System Website

The purpose of Michigan's Great Start Trauma Informed System is to add a trauma informed approach into our comprehensive early childhood system known as Great Start.

This site is designed to provide information about the effect of trauma and toxic stress on young children and ways to lessen negative outcomes. Two types of learning format are available – Online self-learning units and a power point presentation for use with groups. The learning formats are designed with several groups in mind, including:

- Child care providers
- Early childhood educators
- Home visitors
- Parents and caregivers
- Doctors

For more information, visit: http://www.michigan.gov/mdhhs/0,5885,7-339-73971_4911_69588---,00.html

Crime Victim Services Commission

The Michigan Crime Victim Services Commission (CVSC) is a state agency within the Michigan Department of Health and Human Services. CVSC is in charge of funding and services for victims of a physical crime.

CVSC has four programs that serve and support crime victims including: Compensation, Sexual Assault Forensic Exam (S.A.F.E), Victim Rights and Crime Victim Assistance (VOCA). No state or federal tax dollars are used to support these programs.

To learn more, you can access additional information at:
www.michigan.gov/crimevictim

Safe Sleep

- Safe sleep for your baby campaign
- Information for Families and Professionals
- Materials available in Spanish and Arabic
www.Michigan.gov/safesleep



Please note: There is a new website to order safe sleep materials

www.healthymichigan.com

Tomorrow's Child has closed as of 12/31/2015

Zika Virus Information – 2/11/16

- Zika virus is spread to people primarily through mosquito bites. The most common symptoms of Zika virus disease are fever, rash, joint pain, and conjunctivitis (red eyes). The illness is usually mild with symptoms lasting from several days to a week. Severe disease requiring hospitalization is uncommon.
- In May 2015, the Pan American Health Organization (PAHO) issued an alert regarding the first confirmed Zika virus infection in Brazil. The outbreak in Brazil led to reports of Guillain-Barré syndrome and pregnant women giving birth to babies with birth defects and poor pregnancy outcomes.
- As of February 9, 2016, local transmission of Zika virus has been reported in 26 countries or territories in the Americas. Updated information about areas experiencing local transmission of Zika virus can be found at <http://www.cdc.gov/zika/geo/index.html>

For the most up-to-date Zika virus information, please visit:

<http://www.michigan.gov/emergingdiseases/0,4579,7-186--376021-,00.html> or <http://www.cdc.gov/>

Michigan Morbidity & Mortality Surveillance MMMS Updates



- ❑ Michigan recently joined the nationwide “**Alliance for Innovation on Maternal Health (AIM): Improving Maternal Health and Safety**” to reduce pregnancy-related complications and deaths . **MI-AIM is a partnership between MDHHS, Michigan Health and Hospital Association (MHA), and Wayne State University (WSU).** To learn more visit: <http://www.safehealthcareforeverywoman.org/>
- ❑ During 2015, the State of Michigan MMMS participated in the national **CDC Pregnancy Mortality Surveillance Validation Study (PMSS)**. Additional information regarding the CDC Pregnancy Mortality Surveillance System (PMSS) is available at: <http://www.cdc.gov/reproductivehealth/MaternalInfantHealth/PMSS.html>
- ❑ MMMS partnered with PRIME to provide an educational presentation for Medical & Injury Committee members regarding social determinants of health and the impact on populations of color in our state; a copy of the 2013 Health Equity Report was disseminated to all MMMS Committee members
http://www.michigan.gov/documents/mdch/2013HealthEquityReport_03212014_454633_7.pdf
- ❑ Michigan House Bill HB 4235 is the *proposed* Maternal Death Report legislative bill that would require mandatory reporting of maternal deaths within 365 days of a pregnancy irrespective of the cause. HB 4235 is consistent with requirements already enacted by other states in the United States and is supported by Michigan Section of ACOG, Michigan Council for Maternal and Child Health and Michigan Department of Health and Human Services. HB 4235 has been included in the Michigan State Medical Society Legislative Policy Committee of strategic priorities for 2015-2016

Fetal Alcohol Spectrum Disorders FASD Updates



Used with permission from State of Mississippi
Department of Mental Health

- ❑ **FASD Awareness Day September 9, 2015**, was recognized with a Michigan Governor's Proclamation to increase public awareness regarding **prevention of prenatal alcohol exposure and the need for early screening and intervention for affected individuals** highlighting the campaign, there is no safe amount of alcohol at any time during pregnancy: **"Stop and think. If you are pregnant or could be pregnant, don't drink!"** http://www.michigan.gov/snyder/0,4668,7-277-57577_59874_72854-369338--,00.html
- ❑ **The FASD Diagnostic Center of Excellence** at Mott Children's Health Center was re-established in 2015 under the leadership of Dr. Lawrence Reynolds, MD. A multidisciplinary team is now fully operational and accepting referrals for FASD diagnostic evaluation of children and adolescents at Mott Children's Health Center: <http://www.mottchc.org/> Mott Children's Health Center mission is to improve lives of Genesee County children and adolescents by providing comprehensive health care services.
- ❑ **Alcohol Free Baby and Me** is an online education course *available at no cost* and approved for CME II, Nursing and Social Work continuing education credit. The course was developed specifically for MIHP healthcare providers and Local Health Departments as a Michigan-based resource for counseling, support groups and treatment locations for alcohol and other substance use disorders at: <https://courses.mihealth.org/PUBLIC/cm710/home.html>
- ❑ CDC released new Alcohol Prevention factsheet available at: <http://www.cdc.gov/alcohol/index.htm>
- ❑ The MDHHS FASD Five Year Plan, 2015-2020, entitled: **Preventing Prenatal Alcohol Exposure and Supporting Individuals Affected by Fetal Alcohol Spectrum Disorders**, is available for download at: http://fasdcenter.samhsa.gov/documents/Michigan_Five_Year_State_Plan.pdf



Providers



Thank You
Thank You
Thank You!!!!

