

The Trend



Tpr. Corey Hebner

Community Services Trooper

Michigan State Police – Gaylord Post

TEEN “PARTY” TRENDS

ALCOHOL USAGE

DESIGNERS (such as 25 i) and METH

HUFFING / DUSTING / WHIPPETS

DXM / PURPLE DRANK / PURPLE LEAN

“MOLLY”, ECSTASY, MDMA

E- CIGARETTES

PRESCRIPTIONS / PHARMA / HEROIN

MARIJUANA TRENDS

TEEN “PARTY” TRENDS

ALCOHOL USAGE

DESIGNERS (such as 25 i) and METH

HUFFING / DUSTING / WHIPPETS

DXM / PURPLE DRANK / PURPLE LEAN

“MOLLY”, ECSTASY, MDMA

E- CIGARETTES

PRESCRIPTIONS / PHARMA / HEROIN

MARIJUANA TRENDS

INHALING ALCOHOL



PALCOHOL



TEEN “PARTY” TRENDS

ALCOHOL USAGE

DESIGNERS (such as 25 i) and METH

HUFFING / DUSTING / WHIPPETS

DXM / PURPLE DRANK / PURPLE LEAN

“MOLLY”, ECSTACY, MDMA

E- CIGARETTES

PRESCRIPTIONS / PHARMA / HEROIN

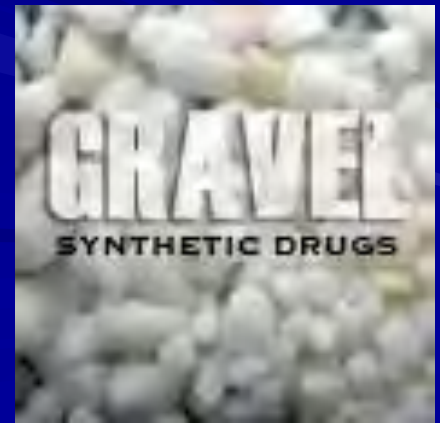
MARIJUANA TRENDS



SMOKING COFFEE

2 C B

LEMON DROP



BATH SALTS

- The active ingredient in the bath salts is a chemical called MDPV, which Mark Ryan, the director of the Louisiana Poison Center, says is similar to cathinone, a compound found in a plant called khat that produces leaves that are chewed in Africa.
- "It's a stimulant, much like the coca leaves found in Colombia and South America," Ryan says. But "these substances that we're dealing with aren't organic," he says. "They are designer drugs, synthetic drugs, made-in-the-lab drugs."





K2



LSD (Blotter Acid) / 25i



48 LSD Blotter Designs
Image by Erowid, © 2000 Erowid.org



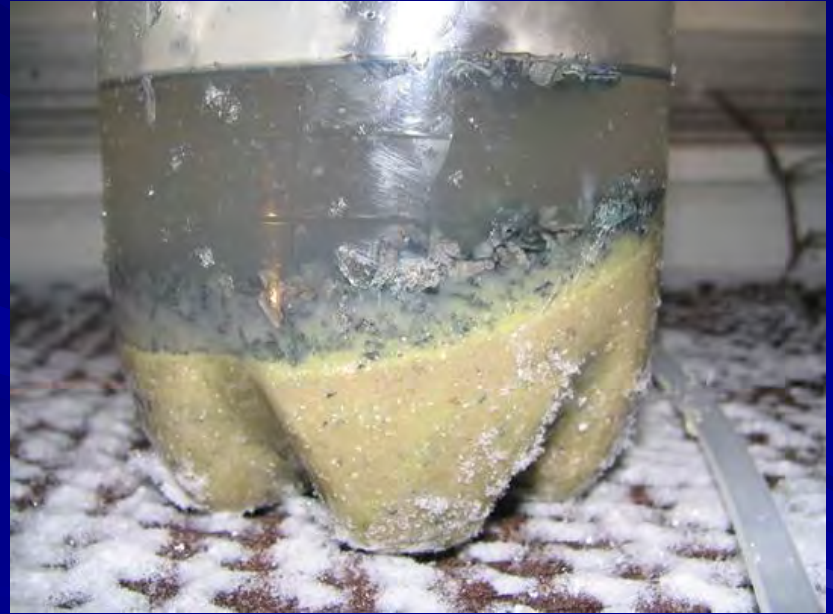
KRATOM



KHAT



Meth Base (after the cook)



One Pot Method Frequently Used In Northeast Michigan!



TEEN “PARTY” TRENDS

ALCOHOL USAGE

DESIGNERS (such as 25 i) and METH

HUFFING / DUSTING / WHIPPETS

DXM / PURPLE DRANK / PURPLE LEAN

“MOLLY”, ECSTASY, MDMA

E- CIGARETTES

PRESCRIPTIONS / PHARMA / HEROIN

MARIJUANA TRENDS

TEEN “PARTY” TRENDS

ALCOHOL USAGE

DESIGNERS (such as 25 i) and METH

HUFFING / DUSTING / WHIPPETS

DXM / PURPLE DRANK / PURPLE LEAN

“MOLLY”, ECSTASY, MDMA

E- CIGARETTES

PRESCRIPTIONS / PHARMA / HEROIN

MARIJUANA TRENDS

DXM SIZZURP

“PURPLE DRANK”



BIEBER



L
I
L
W
A
Y
N
E



“PURPLE DRANK/LEAN”

Codeine/promethazine cough syrup mixed in with some Sprite. Serve it up in a white styrofoam cup with some ice. GOOD TO GO!



LYRICS

- Purple Drank Gorilla Zoe
- Sippin on Some Syrup Three 6 Mafia

- All it wanted, can flaunted, she on that x and the tootie fruit
40 dollars for just one ounce ounce plus
The next is how its no ounce niggas
Niggas sipping and dipping and tripping, man i'm bout all out

Sippin' on some siz-erp, sip, sippin' on some, sip (repeat 4x)

More lyrics: http://www.lyricsmania.com/sippin_on_some_syrup_lyrics_three_6_mafia.html
All about Three 6+Mafia: <http://www.musicstory.com/music/Three+6+Mafia>

- Like a G 6 Far East Movement

- Poppin bottles in the ice, like a blizzard
When we drink we do it right gettin slizzard
Sippin sizzurp in my ride, like Three 6
Now I'm feelin so fly like a G6
Like a G6, Like a G6
Now I'm feelin so fly like a G6

D.X.M.

D.X.M.

Dextromethorphan is a cough suppressant. It is an active ingredient in many over-the-counter cold and cough medicines.



Chopped and Screwed

Purple drank served as a major influence on the southern hip hop genre of music known as “chopped and screwed,” in which songs are remixed to reduce the tempo below 70 quarter-note beats per minute. The narcotic effects of purple drank are known to slow down brain activity, which complements a style of music with an extremely low tempo. Peer-to-peer music sharing hubs like Napster helped distribute this brand of music to a wider audience in the late 1990s. On YouTube, edited videos that have been intentionally slowed down are often given the label “chopped and screwed,” though not to be confused with [800% Slower Remixes](#). For more examples of “chopped and screwed” remixes, check out the [video gallery](#).



“SKITTLES”

- Coricidin (DXM) abusers refer to the bright-red pills as "Skittles."



DGK Skateboard

LEGALIZED **DGK**



TEEN “PARTY” TRENDS

ALCOHOL USAGE

DESIGNERS (such as 25 i) and METH

HUFFING / DUSTING / WHIPPETS

DXM / PURPLE DRANK / PURPLE LEAN

“MOLLY”, ECSTASY, MDMA

E- CIGARETTES

PRESCRIPTIONS / PHARMA / HEROIN

MARIJUANA TRENDS

PARTY WITH.....
MILEY?
MOLLY?





MDMA / ECSTASY / “MOLLY”

What are the street names/slang terms for it?

Adam , Bean , E , Ecstasy , M , Roll , X , XTC

What is it?

MDMA or Ecstasy (3-4-methylenedioxymethamphetamine), is a synthetic drug with amphetamine-like and hallucinogenic properties.

What does it look like?

Ecstasy come in a tablet form that is often branded, e.g. Playboy bunnies, Nike swoosh, CK

How is it used?

Taken in pill form, users sometimes take Ecstasy at "raves," to keep on dancing and for mood enhancement. Older teens and college students often frequent raves.

What are its short-term effects?

Short-term effects include psychological difficulties, including confusion, depression, sleep problems, drug craving, severe anxiety, and paranoia – during and sometimes weeks after taking MDMA, physical symptoms such as muscle tension, involuntary teeth clenching, nausea, blurred vision, rapid eye movement, faintness, and chills or sweating.

What are its long-term effects?

Recent research findings link MDMA to long-term damage to those parts of the brain critical to thought and memory. Chronic use of MDMA was found, first in laboratory animals and more recently in humans, to produce long-lasting, perhaps permanent, damage to the neurons that release serotonin, and consequent memory impairment.

What is its federal classification?

MDMA is a Schedule I drug

Source: National Institute on Drug Abuse (NIDA); Drug Enforcement Agency (DEA)

ECSTASY TABLETS



99 Ecstasy (MDMA) Tablets

Image © 2000 Erowid.org



TEEN “PARTY” TRENDS

ALCOHOL USAGE

DESIGNERS (such as 25 i) and METH

HUFFING / DUSTING / WHIPPETS

DXM / PURPLE DRANK / PURPLE LEAN

“MOLLY”, ECSTASY, MDMA

E- CIGARETTES

PRESCRIPTIONS / PHARMA / HEROIN

MARIJUANA TRENDS

E-CIGARETTES

Can be used without nicotine and still create vapor or sensation of smoking.

Each vile or “carto” comes in different concentrations of nicotine. Normal dosages are 6mg, 12mg, and 18mg, but “cartos” can be found as high as 48 mg.

The “cartos” are flavored; some include cotton candy, bubble gum, and others.

The toxicity of the vapor is still unknown. Other than the nicotine, other addictive chemicals are also added.

TREND: Adding nicotine viles to energy drinks.



TEEN “PARTY” TRENDS

ALCOHOL USAGE

DESIGNERS (such as 25 i) and METH

HUFFING / DUSTING / WHIPPETS

DXM / PURPLE DRANK / PURPLE LEAN

“MOLLY”, ECSTASY, MDMA

E- CIGARETTES

PRESCRIPTIONS / PHARMA / HEROIN

MARIJUANA TRENDS

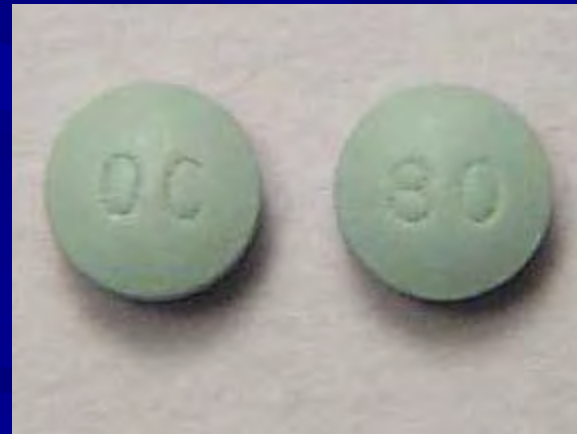
XANAX



VICODIN (hydrocodone)



OxyContin (Oxycodone)





Most hydrocodone is 5-10 mg. Zohydro ER can be dosed as high as 50 mg. Powder in capsule.

Zohydro ER



Roxicodone



Oxycodone based pain pill. Does have long-lasting pain relief; but also a euphoric rush, which creates more of an addiction.

Was created to counteract
addiction to opiodes.

Suboxon





Fentanyl

30x stronger
than heroine.

80x-100x more
potent than
morphine.

Time release
patches /
overdose.



NSDUH 2011

**6.1
MILLION
PEOPLE**

*have used them
non-medically in
the past month*





HEROIN PILLS

80% of modern heroin users initiated on a prescription pill.*

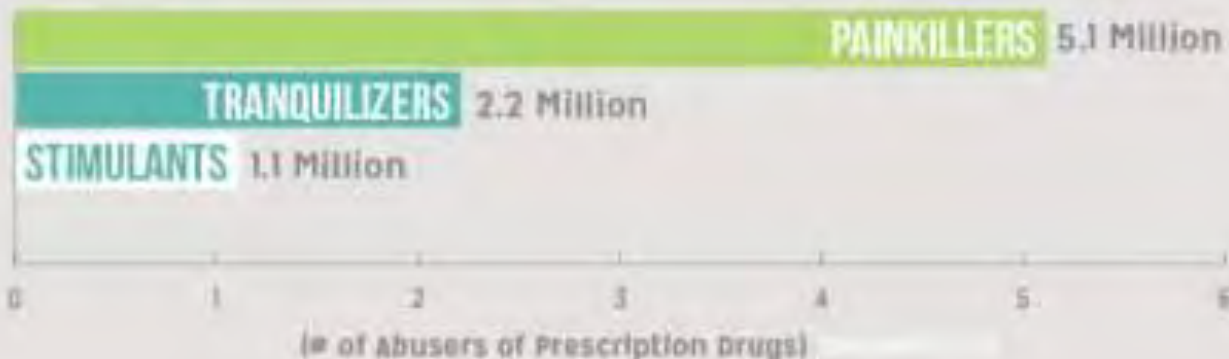
*2013 SAMHSA study “Association of Non-Medical Use and Initiation of Heroin Use in the United States.”

In 2010,
Enough prescription painkillers were prescribed to Medicine
EVERY AMERICAN ADULT EVERY 4 HOURS
For 1 Month
PBS 2014

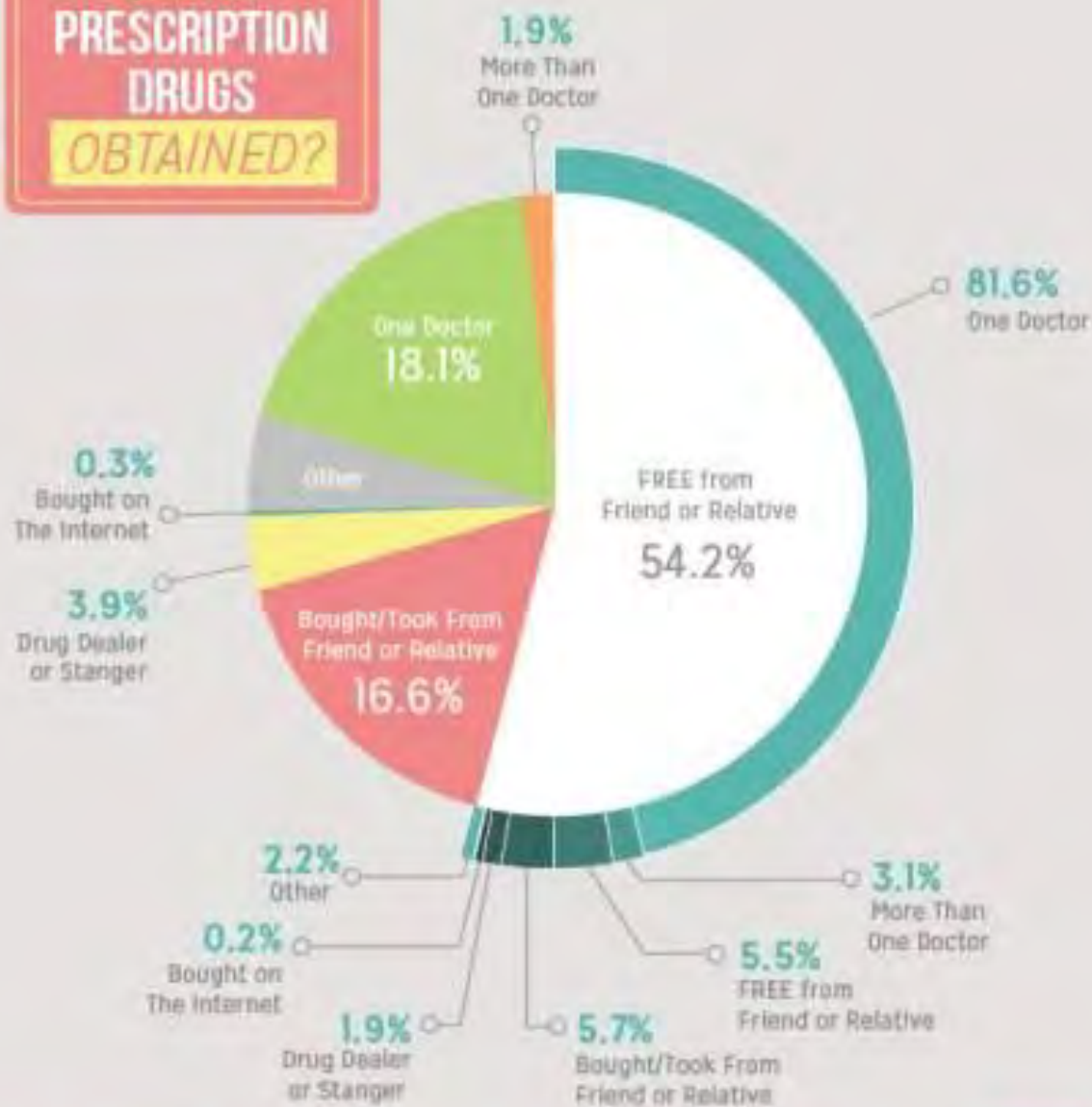
The # of Prescription Medicine Abusers in 2010 was

8.76 MILLION

Most abused prescription
Drugs fall under 3 categories:



Where are
**PRESCRIPTION
DRUGS**
OBTAINED?



WISCONSIN 2011



TEEN “PARTY” TRENDS

ALCOHOL USAGE

DESIGNERS (such as 25 i) and METH

HUFFING / DUSTING / WHIPPETS

DXM / PURPLE DRANK / PURPLE LEAN

“MOLLY”, ECSTASY, MDMA

E- CIGARETTES

PRESCRIPTIONS / PHARMA / HEROIN

MARIJUANA TRENDS



**What are
Shatter,
Dabs, and
BHO?**



DEFINITIONS

- 40 TO 5
- 210
- SESH
- ONE LOVE
- KUSH
- NAIL

DEFINITIONS

- 40 TO 5
- 210
- SESH
- ONE LOVE
- KUSH
- NAIL
- 710



DEFINITIONS

SHATTER

710

SLICK BALL

SEEDLESS

HONEY

BUTTER

OIL RIG

DEFINITIONS

SHATTER



SLICK BALL



SEEDLESS



HONEY BUTTER

OIL RIG





CLOTHING

SEEDLESS



SRH



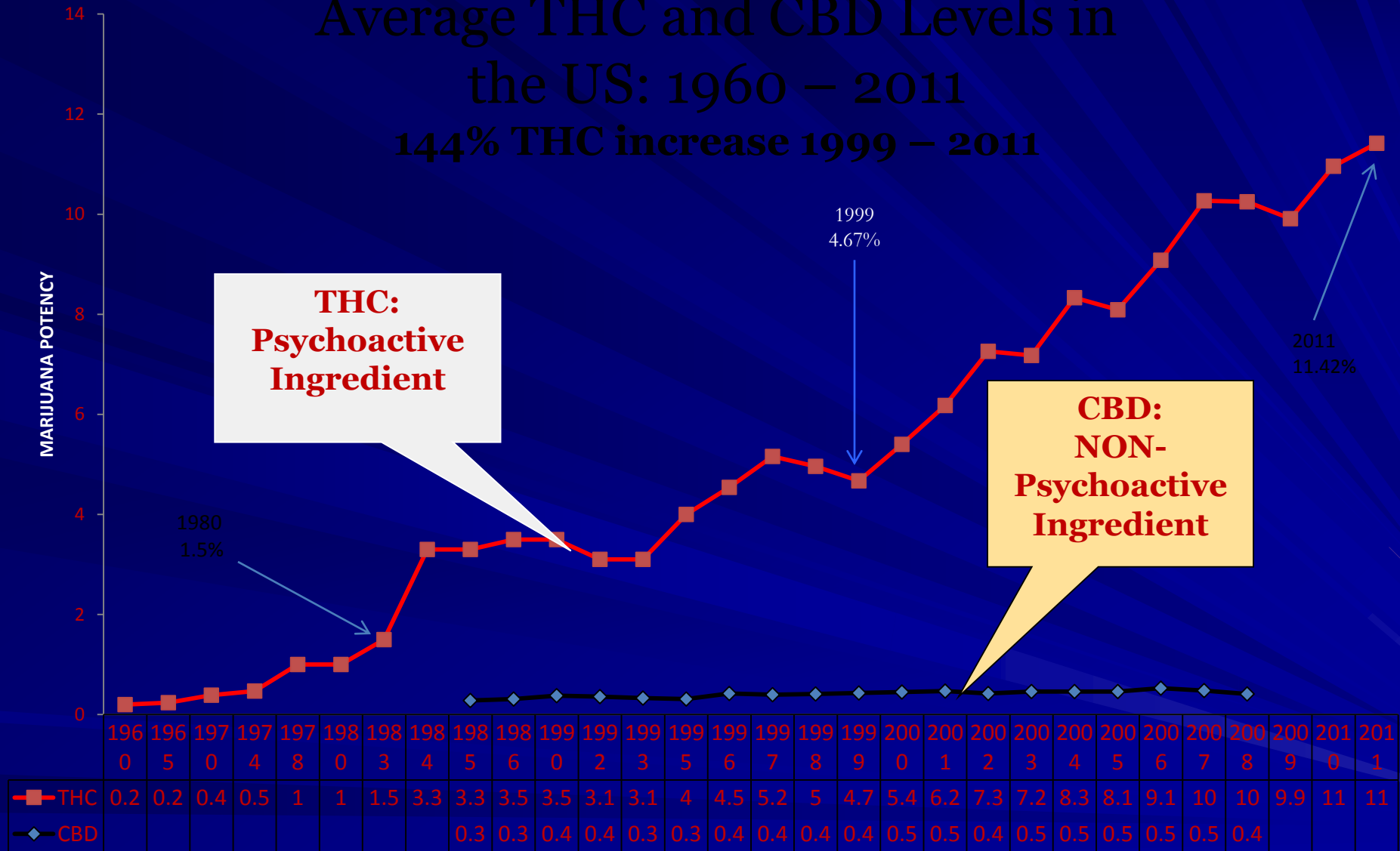
APERTURE

40 TO 5

NBI

Average THC and CBD Levels in the US: 1960 – 2011

144% THC increase 1999 – 2011



Cannabis sativa has a higher level of THC compared to CBD.

Cannabis indica has a higher level of CBD compared to THC.

Cannabis strains with relatively high CBD:THC ratios are less likely to induce anxiety than vice versa.

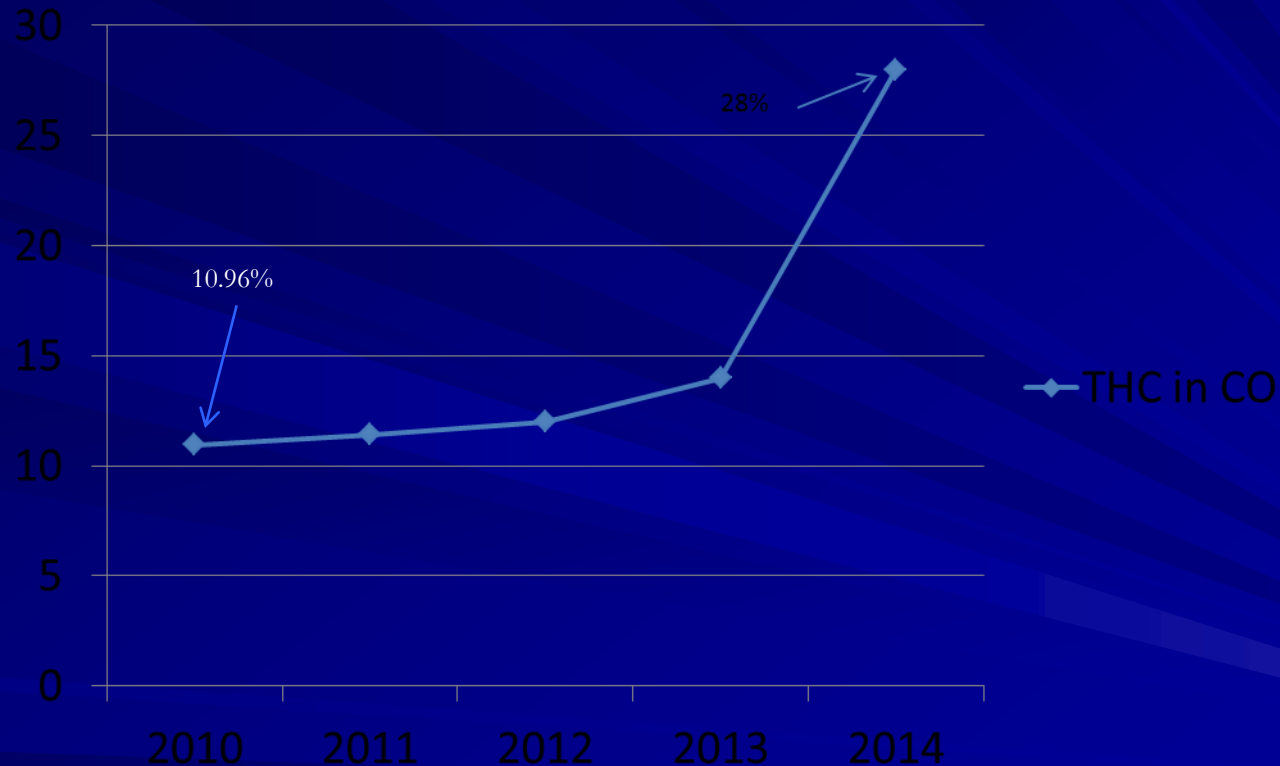
This likely means the high concentrations of CBD found in *Cannabis indica* mitigate the anxiogenic effect of THC significantly.

The effects of *sativa* are well known for its cerebral high.

Indica is well known for its sedative effects which some prefer for night time use. The effects of *indicas* are predominantly physical and sedative.

The Last 4 Years in Colorado

155.47% increase in THC levels



HIGH TIMES

CANNABIS CUP

STIMMERS PARTIES
CITY OF AUTO CITY

TRUCKS & MERCHANDISE
10:00 AM - 12:00 PM



LIVE
MUSIC
2015

AUTO CITY SPEEDWAY

AUG.
22-23
2015

MICHIGAN



GET TICKETS AT CANNABISCUP.COM

“But it’s just a plant...”

(80-90% THC) Concentrates



“Green Crack” wax



“Ear Wax”



Butane Hash Oil (BHO)



Hash Oil Capsules



“Budder”

“Shatter”



Slide Courtesy of
Marijuana Impact on
Public Health & Safety
in Co.

The higher the THC %; the less moisture.

20%
BUDDER

40%
WAX

90-95%
SHATTER





nugtella



Hazelnut spread with
Medical Marijuana



Slide Courtesy of Marijuana Impact on Public Health & Safety in Co.



Slide Courtesy of Marijuana Impact on Public Health & Safety in Canada



Available in several color options



Bezel

Watch Face



Discreet
& Smell Proof



DHgate.com topdeals2013





CLOTHING

SEEDLESS



SRH



APERTURE

40 TO 5

NBI

HIDDEN COMPARTMENTS

N.B.I. (NO BAD IDEAS)
they only make hats.

NBI –
2251
Gray legion
Specialty
fabric

Inner
pocket



•NBI – 2030
•Striped beanie
•Inner pocket
•100% acrylic

•NBI – 2221

Black tonal plaid
Flexfit®
Inner pocket



NBI – 2222

- Black fedora
- Tonal band
- Inner pocket







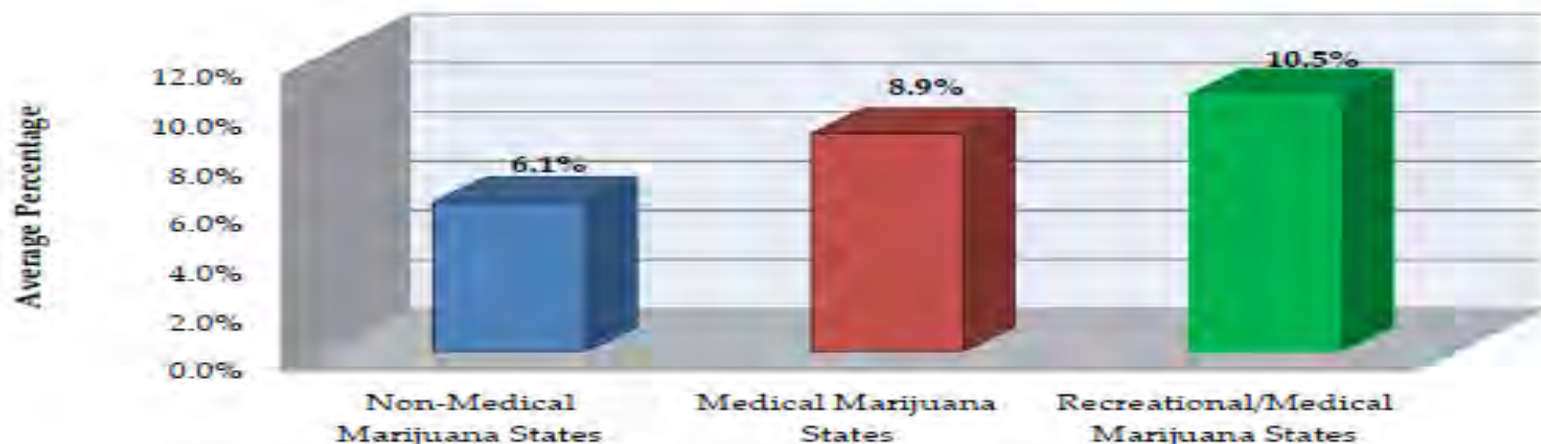


HIDDEN COMPARTMENTS



- 11 color fully embroidered back left poCket
- distreSs waSh
- wrinkle effect at front pockets & back knees
- distreSs grinder claw marks here and there
- leather "white label" patch label on back. cuStom emboSsed with green sprout logo leaves and custom stitching.
- sdOt log embroidery stitched on back right pocket
- signature little green seedleSs flag label on back left pocket
- 2 heavy duty waist buttons for 1 inch adjustability in size, custom molded with logo insignias
- claSsic button fly with smaller version of the main buttons
- reinforced with style : custom sdOt metal dome rivets at side seams and coin pOcket
- dark vintage dirty wash indiGo color for claSsic style. enjoy them fading over time as you get faded . . .
- custom logo print inside front poCkets
- laSt but not least, detachable nutsak staSh bag that connect inside waistband and hangs in the crotch area to keep your valubles by the family jewels . . .

Average Past Month Use by 12 to 17-Year-Olds, 2013



SOURCE: SAMHSA.gov, National Survey on Drug Use and Health 2012 and 2013

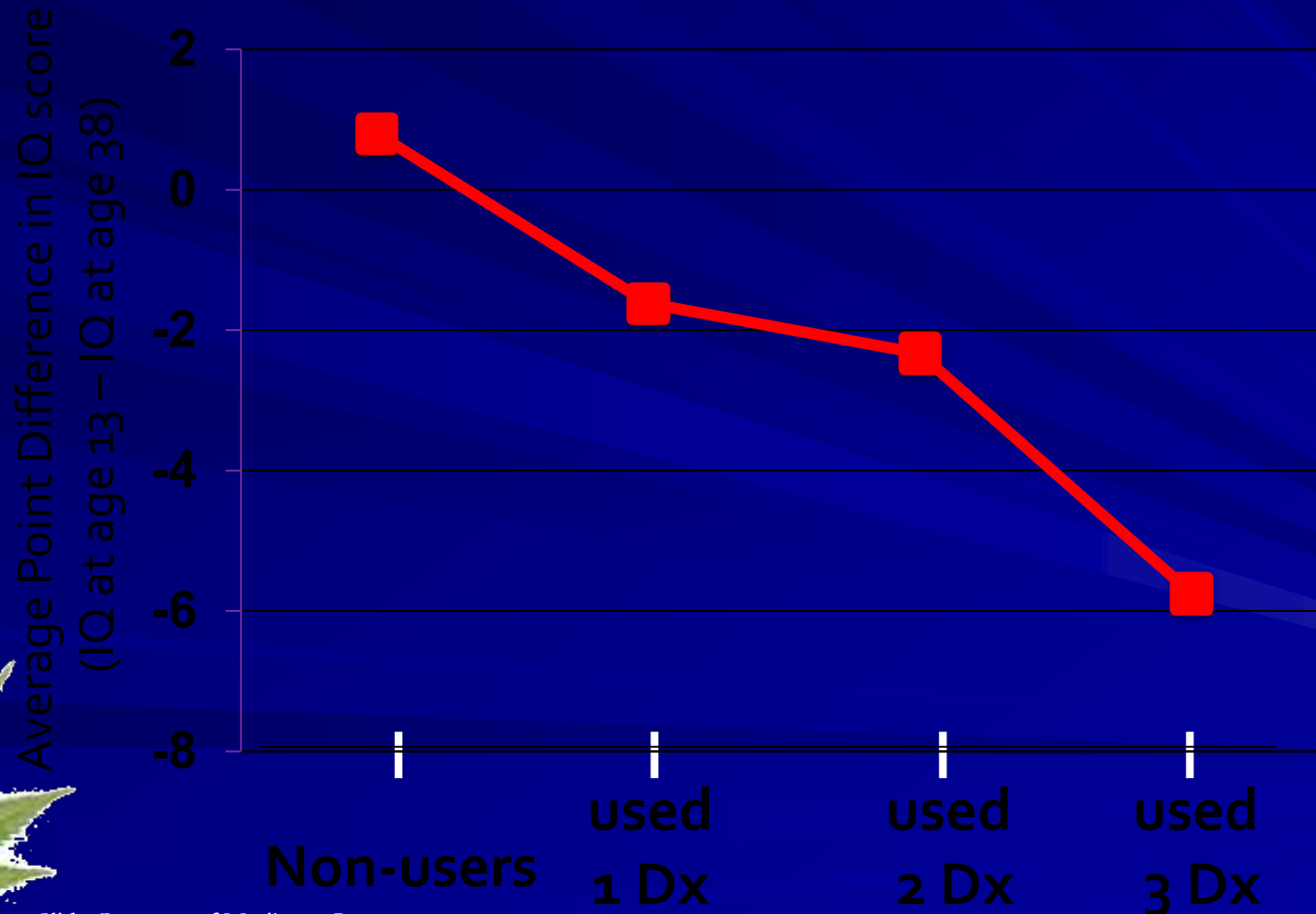
Youth (Ages 12 to 17 Years) Past Month Marijuana Use National vs. Colorado



SOURCE: SAMHSA.gov, National Survey on Drug Use and Health, 2006-2013

Persistent Marijuana Users Show A Significant IQ Drop between Childhood and Midlife

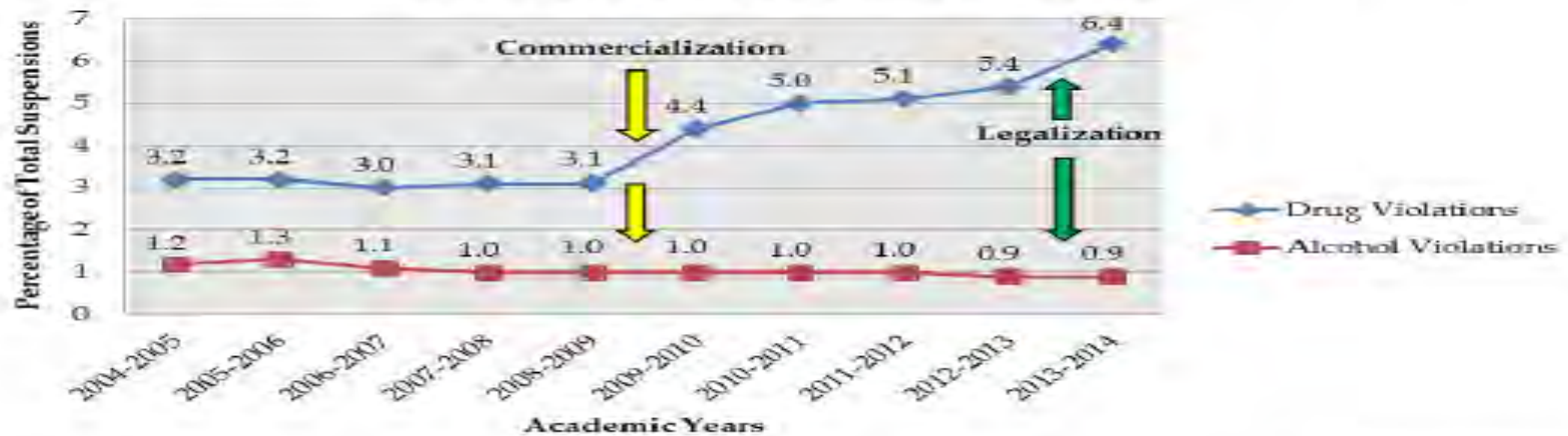
Followed 1,037 individuals from birth to age 38. Tested marijuana use at 18, 21, 26, 32 and 38. Tested for IQ at ages 13 and 38



Slide Courtesy of Marijuana Impact on
Public Health & Safety in Co.

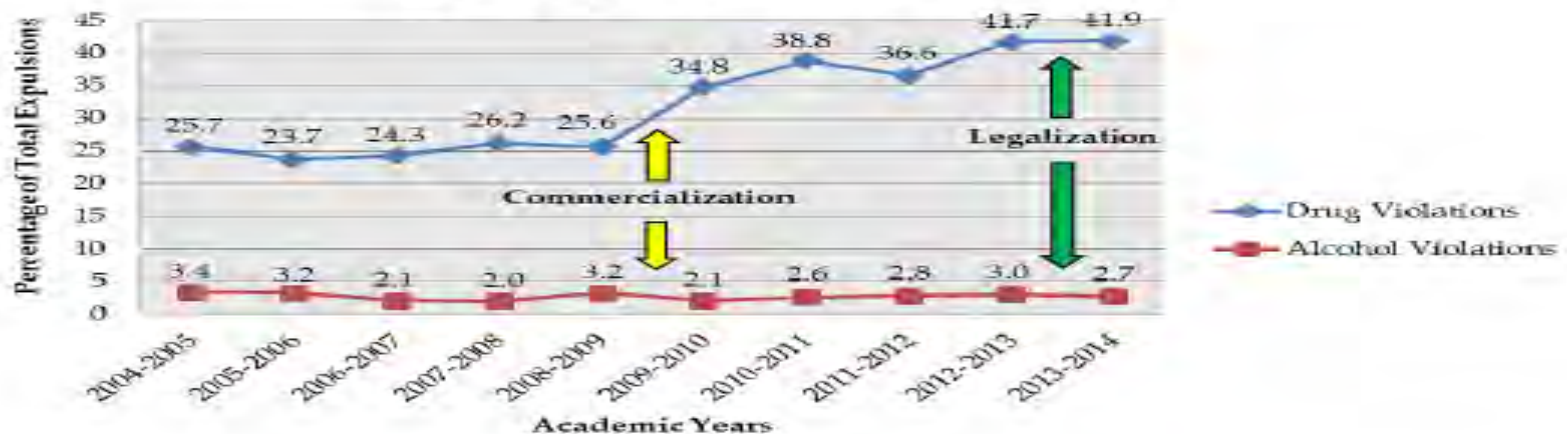
Source: Meier MH et al., PNAS Early Edition 2012

Percentage of *Total Suspensions* in Colorado from 2004-2014 School Years



SOURCE: Colorado Department of Education, 10-Year Trend Data: State Suspension and Expulsion Incident Rates and Reasons

Percentage of *Total Expulsions* in Colorado from 2004-2014 School Years

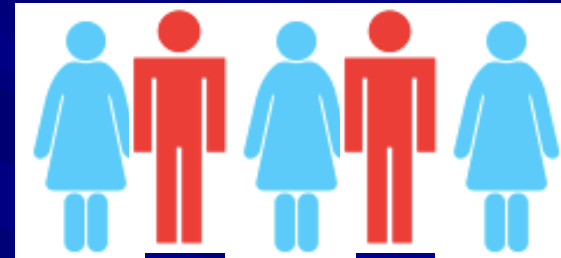


SOURCE: Colorado Department of Education, 10-Year Trend Data: State Suspension and Expulsion Incident Rates and Reasons

1 in 6 teens become addicted

Keeping in mind that this is based on THC content <12%

1 in 10 adults and **1 in 6 adolescents** who try marijuana will become addicted to it.



- The adolescent brain is especially susceptible to marijuana use.
- When kids use, they have a greater chance of developing addiction.



MARIJUANA CAN MAKE KIDS VERY SICK.

You can keep the children in your life safe and healthy by storing all marijuana products in a locked area that children cannot see or reach.

Children want to be like their parents and the other adults in their lives. When you use marijuana in front of them, they may want to use it, too.

You can keep them safe and healthy by not using marijuana when kids are around.

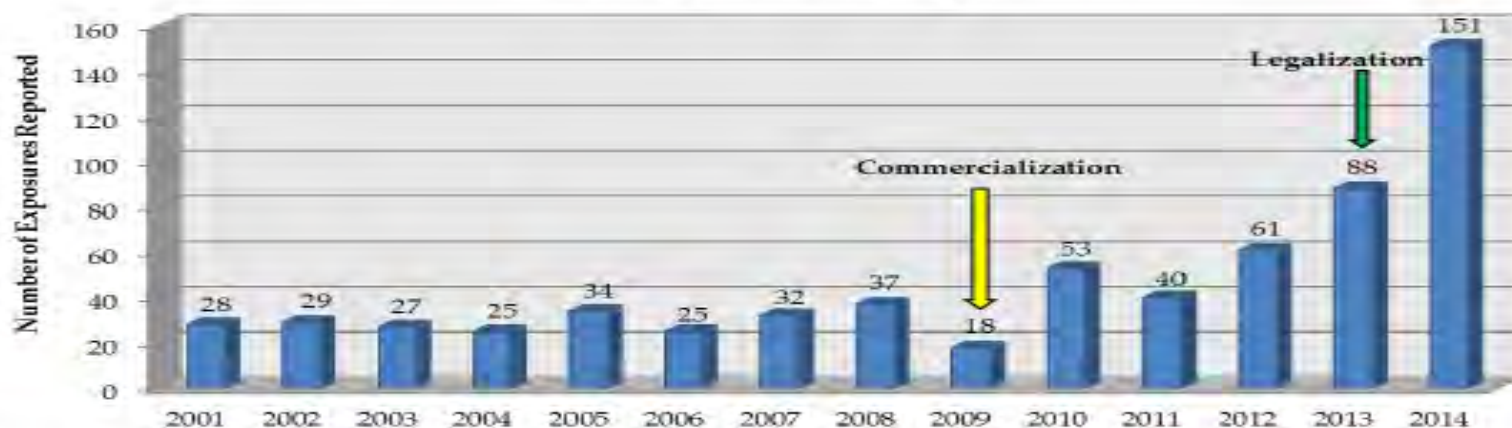
SECTION 5: Marijuana-Related Exposure

Findings

- There has been an upward trend of marijuana-related calls to the Rocky Mountain Poison and Drug Center since medical marijuana was commercialized in 2009.
- In 2014, when marijuana retail businesses began operating, marijuana-related calls increased over 70 percent from 2013.

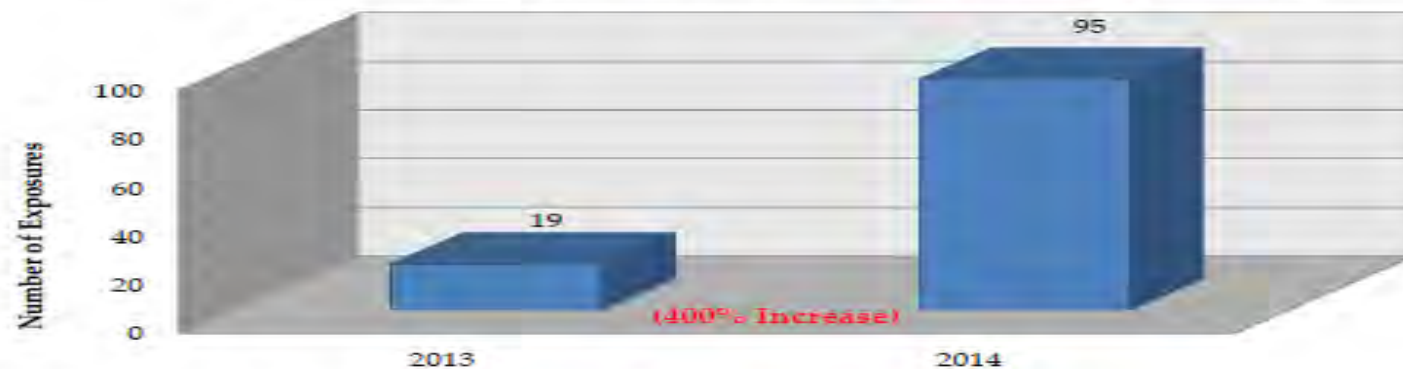
Data

Number of Exposures Reported for Marijuana Only



SOURCE: Colorado Department of Public Health and Environment, *Monitoring Health Concerns Related to Marijuana in Colorado: 2014* via Rocky Mountain Poison and Drug Center

Number of THC Infused Edible Exposures



SOURCE: Rocky Mountain Poison and Drug Center

POT MAKES PETS SICK



Pot ingestion leads to:

- Coordination issues
- Depression
- Seizures
- Vomiting
- Coma

Cost for treatment

(based on Trupanion claims history)

- Lowest: \$89
- Highest: \$1,783
- Average: \$603

Prevention is easy:

- Keep pot (leaves, smoke, or in baked goods) away from pets!

trupanion

One argument of those in favor of legalization is that users will switch from alcohol to marijuana, thus reducing consumption. To date, that theory is not supported by the data.

Colorado Average Consumption of Alcohol in Gallons, Per Calendar Year



SOURCE: Colorado Department of Revenue, Colorado Liquor Excise Taxes

Election Results

November 2012 Amendment 64 Election Results:

- 54 percent in favor
- 46 percent opposed

Polling

September 2014 Suffolk University/*USA Today* Poll Colorado

- 46 percent continue to support Amendment 64
- 50.2 percent do not agree with Amendment 64 decision

2095 30th St., Boulder
303-402-0122

www.boulderdivine.com
www.bouldermassageandskincare.com
720-432-1108

BIRTHDAY of a LEGEND SALE
30% OFF GLASS

20% OFF EVERYTHING

W/ MED CARD
OR STUDENT I.D.

• Excludes some items

mile high glass with class!
pipe and tobacco

— 1144 Pearl St. 303-443-PIPE
— 3001 W. 74th Ave. 303-426-6343

Highlands Ranch — 7130 E. County Line Rd. 303
Denver — 2046 Arapahoe in LoDo 303

THE Chronic
YOUR GUIDE TO
MEDICAL MARIJUANA
IN COLORADO
COMING SOON IN



APRIL
JUNE
AUGUST
OCTOBER

• **ENJOY!**

Slide Courtesy of Marijuana Impact on Public Health & Safety in Co.

NEW STORE NOW OPEN HAMPDEN & WADSWORTH 303-756-2120

Freakys

SMOKE SHOPPE
TATTOO & BODY PIERCING

Mon - Thurs 10am - 9pm
Fri & Sat 10am - 10pm
Sunday Noon - 6pm

1135 Broadway
under MEININGER
303-413-0420

YA-BA DAB-A DO!!!

20% OFF

PIPES

1ST PIERCING \$25
2ND PIERCING \$20
BRING A FRIEND FOR THE 2ND

TATTOOS BY **JULES**

TATTOOS BY **CORY**

WALK-INS WELCOME

WWW.FREAKYS.COM

LEGALIZE MEDICAL MARIJUANA

I'M A PATIENT NOT A CRIMINAL



Part of the CBS stand in support of the Silver State
www.thefourhour.org



Prescribed
ISRAEL



6:17 75°





For many reasons, I prefer...

marijuana over alcohol.

Does that make me a bad person?

RegulateMarijuana.org

LAMAR

April is Alcohol Awareness Month

Beer



Wine



Safer



Don't just drink. Think.

MarijuanalsSafer.org



Beer



Football



Safer



MarijuanaPolicy.org/Football

CAN YOU SPOT THE POT?



MARIJUANA CANDY. TRICK OR TREAT?

SMARTCOLORADO.ORG

© 2010 Smart Colorado. All rights reserved.



WENATCHEE • WA

GOT WEED?

9 MILES AHEAD
LEFT ON EASY STREET

RECREATIONAL MARIJUANA STORE

3012 GS CENTER RD | WENATCHEE, WA



Would your child know if
this cookie has pot in it?

Marijuana Harmless? *ThinkAgain.org*

OUTFRONT

1454



MARIJUANA: No Hangovers • No Violence
No Carbs!



Put to by Dr. David Horowitz
Produced by David Horowitz (L.A.M.B.)

LAMAR

**STOCK UP
B4/20.**



THE DENVER
POST

COMPANY HOPES TO CAPITALIZE ON 4/20 CROWD

LivWell

ENLIGHTENED HEALTH

PRICE
QUALITY
SELECTION

NINE LOCATIONS ACROSS THE STATE

WE DON'T HAVE ONE PRIME LOCATION.

We have nine of them.

We're scientists, inventors, farmers, friends and family. We own every step of the process that puts the finest, and most affordable marijuana on the shelves. From our grow, where we cultivate and harvest by hand, to our knowledgeable budtenders, we want you to have the best experience possible. We want you to LivWell.

LivWell on Broadway
REC / MEDICAL
432 S Broadway
Denver, 80209
8:00 am - 7:00 pm
720-428-2550

LivWell on Larimer
REC / MEDICAL
2863 Larimer St
Denver, 80205
8:00 am - 7:00 pm
303-484-1662

LivWell on Evans
REC / MEDICAL
2193 W Evans Ave
Denver, 80223
8:00 am - 7:00 pm
720-361-2981

LivWell Garden City
REC / MEDICAL
2647 34th Ave
Garden City, 80631
8:00 am - 8:00 pm
970-616-6007

LivWell on Murray
MEDICAL
570 N Murray
CO Springs, 80915
8:00 am - 7:00 pm
719-574-8443

dope

MAGAZINE



Slightly Stoopid

HITTIN HIGH NOTES WITH POT'S TOP BAND

COLORADO

THE ENTERTAINMENT
ISSUE N°1

— FREE —

HITTIN HIGH NOTES
WITH POT'S TOP BAND

DEFENDING
OUR
— PLANT —
EVERYWHERE

STRAIN OF THE MONTH
OG GHOST TRAIN RAZE

CANNABIS DATING
LOVE IS ALL WE NEED

DABBING
IN AMSTERDAM

SHIFT CANNABIS CO.
PUSH FOR QUALITY



Marijuana Business Daily™

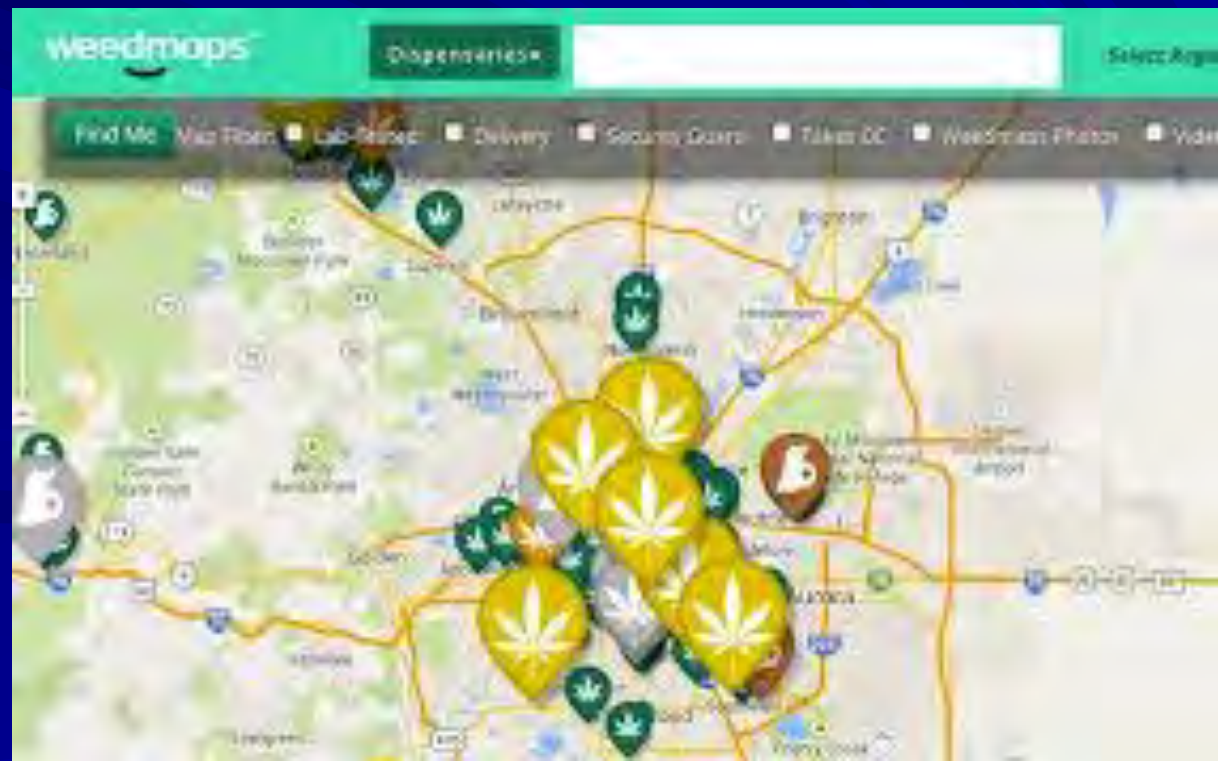
The most trusted cannabusiness news source since 2011

- April 14, 2016 Ex-NFL Players Team With California MMJ Company**
- April 18, 2016 Coming to Vegas: A Casino That Serves Cannabis?**
- April 18, 2016 Alaska's Marijuana Clubs Dwindle**
- April 18, 2016 Pennsylvania Officially 24th Medical Marijuana State**
- April 19, 2016 Stayin' Alive: Montana Medical Marijuana Dispensaries Still Open Despite Court Ruling**
- April 19, 2016 Cannabis Pioneer Asks Public for Money After Raid**



Marijuana Business **Daily**™

The most trusted cannabusiness news source since 2011



Jeff Schrier | MLive.com Flames shoot through the roof and heavy smoke rolls out as Saginaw firefighters work to extinguish a fire that destroyed a house at 409 Moore near Greenwich in Saginaw on Sunday Feb. 21, 2016 about 1:50 p.m.



STINKY STEVE

EXPLAINS CANNABIS AND CPS

An Educational Children's Book
About Social Services

Written By Maggie Volpe

Illustrated By Mauricio J. Flores

STINKY STEVE

EXPLAINS CASUAL CANNABIS

An Educational Children's Book
About Recreational Drugs

Written By Maggie Volpe
Illustrated By Mauricio J. Flores

STINKY STEVE

EXPLAINS DADDY'S DAB

An Educational Children's Book
About Cocaine Concentrate

Written By Maggie Volpe

Illustrated By Mauricio J. Flores

STINKY STEVE

EXPLAINS GRANDMA'S GROWNCH

An Educational Children's Book
About Grandpa's Attitudes

Written By Maggie Volpe

Illustrated By Mauricio J. Flores

STINKY STEVE

EXPLAINS MOMMY'S MEDICINES

An Educational Children's Book
About Elderly Grandma Problems

Written By Maggie Volpe
Illustrated By Mauricio J. Flores

STINKY STEVE

EXPLAINS WHY PAPAS IN PRISON FOR PET

An Educational Children's Book
About Prohibition
And Petting

Written By Maggie Volpe

Illustrated By Mauricio J. Flores

The Marijuana Lobby

In Co. the lobby outspent the Opposition \$20 Million to \$450k



**We are
the Drug
Policy
Alliance.**

**“MPP is a Machine, whereby you
insert money in one end and policy
change comes out the other end”**

**--Rob Kampia/ED of MPP in his 2014 end of year email
fundraising initiative**

NORML

House Explosions / Injuries with butane extraction

THE LEGALIZATION OF MARIJUANA IN COLORADO *THE IMPACT*

ACCIDENT RATES WITH THC / HOSPITAL DATA
/ ARAPAHOE TEEN HEALTH ADMITTANCE FOR

Volume 3
Preview 2015

USAGE RATES FOR MINORS

Rocky Mountain High Intensity
Drug Trafficking Area
www.rmhidta.org



COLORADO

Department of
Transportation



Ending Marijuana Prohibition in Colorado
A view from the Colorado Highway Safety Office



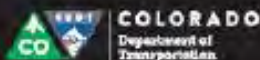
4/20 & The Cannabis Cup

WELCOME

to the 4TH ANNUAL CANNABIS CUP

As you sample many strains, CDOT wants you to stay safe and DUI-free. Here are some quick tips:

- 1 Cost of cab fare < cost of a DUI**
Even 1 hit can put you over the limit. Take public transit, a taxi, Lyft or Uber.
- 2 Don't push your luck!**
Colorado law enforcement have advanced training to detect impairment.
- 3 Be aware**
It's illegal to smoke, eat or vape in public.
- 4 Keep it in Colorful Colorado**
Don't cross state lines or go to DIA with marijuana.
- 5 Learn more at DriveHighDUI.com**
Stay safe and enjoy the Cannabis Cup!



The 5th Annual Cannabis Cup in Denver attracted 37,000 marijuana enthusiasts from around the world during the weekend of 4/20. This was the ideal event to reach the *Drive High, Get a DUI* target audience.

In an effort to reach our audience in a creative way, we made custom labels (see label on left) with information about marijuana laws and attached them to thousands of bags of Cheetos and Goldfish.

Overall responses from attendees were extremely positive. People immediately noticed the label on the front and shared pictures of it via social media.

ON THE WEB

- www.mjbusweekly.com
- www.hightimes.com
- www.weedmaps.com
- www.tallcopsaysstop.com
- www.stinkysteve.com
- www.erowid.org
- www.420magazine.com
- www.urbandictionary.com



Tpr. Corey Hebner
Michigan State Police – Gaylord Post
(989) 619-3009

HebnerC@michigan.gov



coreyhebner



bluegoose983



@cohebner