

# Data to Care – the Link-Up Michigan Program

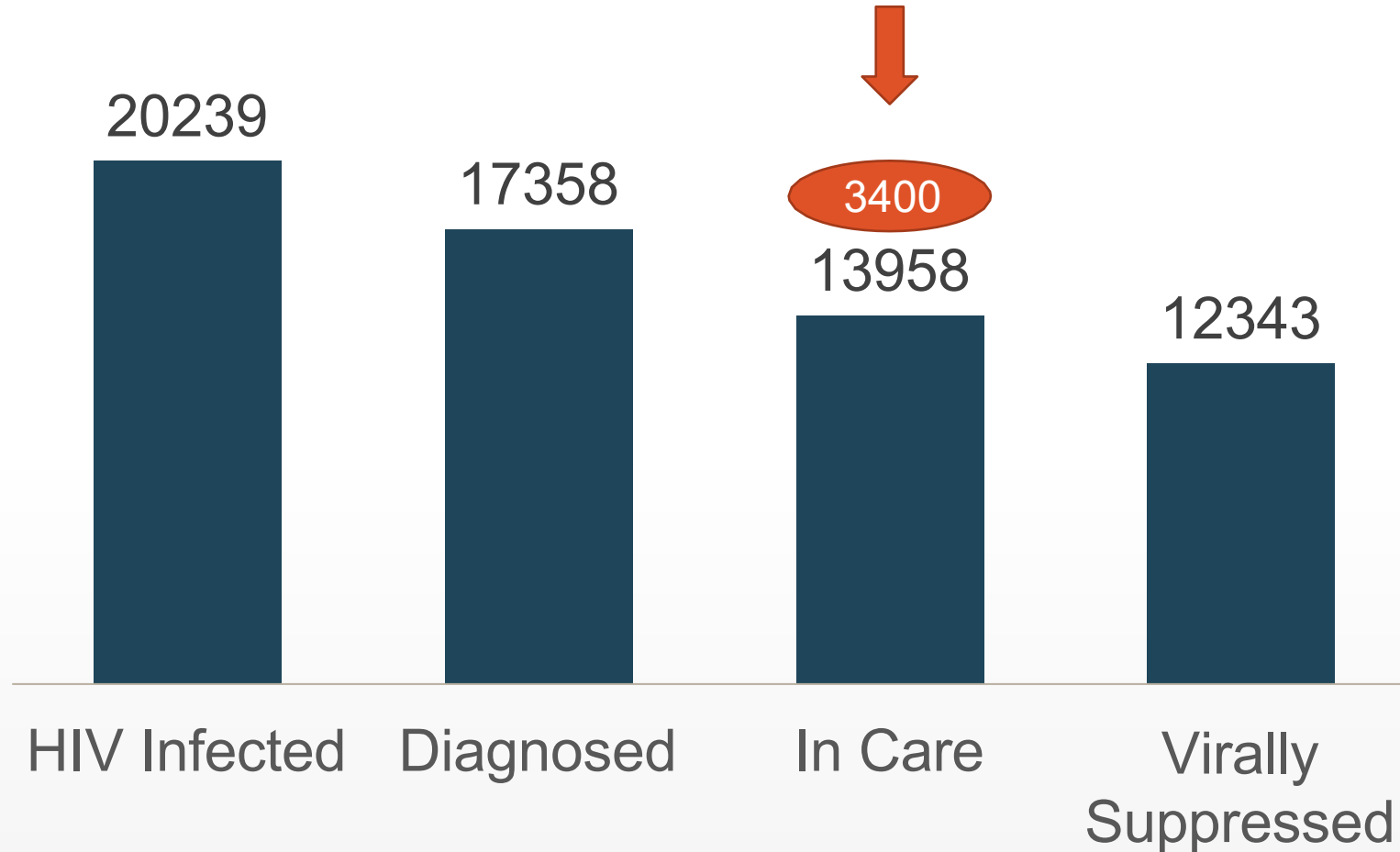
# What is Data to Care (D2C)?

CDC definition: “**Data to Care** is a public health strategy that aims to use HIV surveillance **data** to identify HIV-diagnosed individuals not in **care**, link them to **care**, and support the HIV **Care** Continuum.”

Basic Concept:

- In Michigan, HIV labs are reported to MDHHS
  - Lab reports are used as a proxy to determine if an HIV-positive individual has been to a medical appointment
- MDHHS sends contact information (name, phone #, address, place/date of diagnosis) to funded local health departments
  - If individual does not live within a funded jurisdiction, Return To Care Unit staff will receive this information
- The local health department and Return to Care staff reach out to these individuals to offer re-engagement into HIV medical care

# What group of people does D2C target?



Michigan Care Continuum, 2022

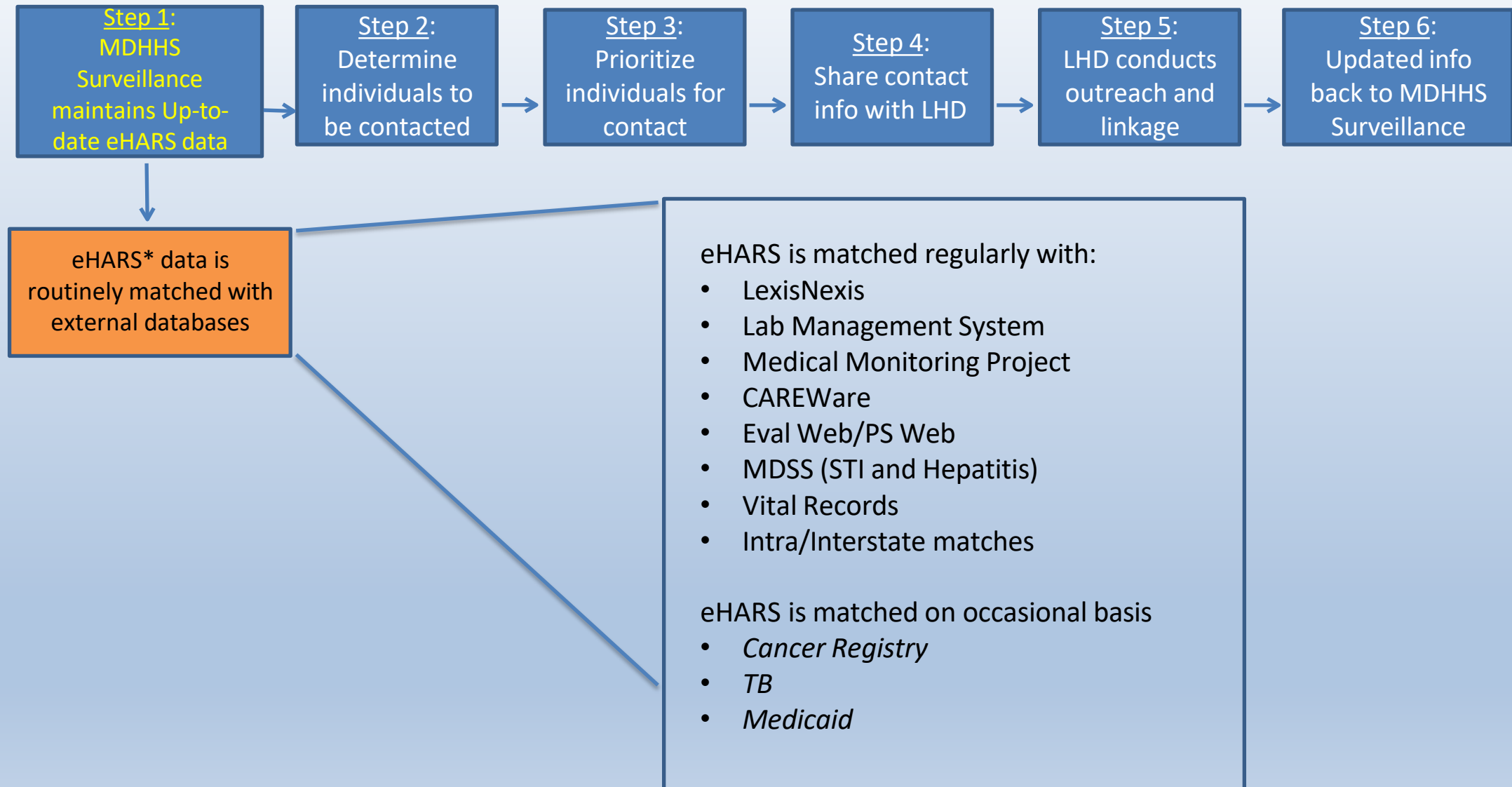
## Not in Care includes individuals never linked

- Diagnosed between 90 and 365 days ago
  - With no CD4, viral load or genotype tests
- OR
- The only labs done were within 8 days of diagnosis (because sometimes initial labs are drawn right after diagnosis, but the individual does not engage in HIV medical care)

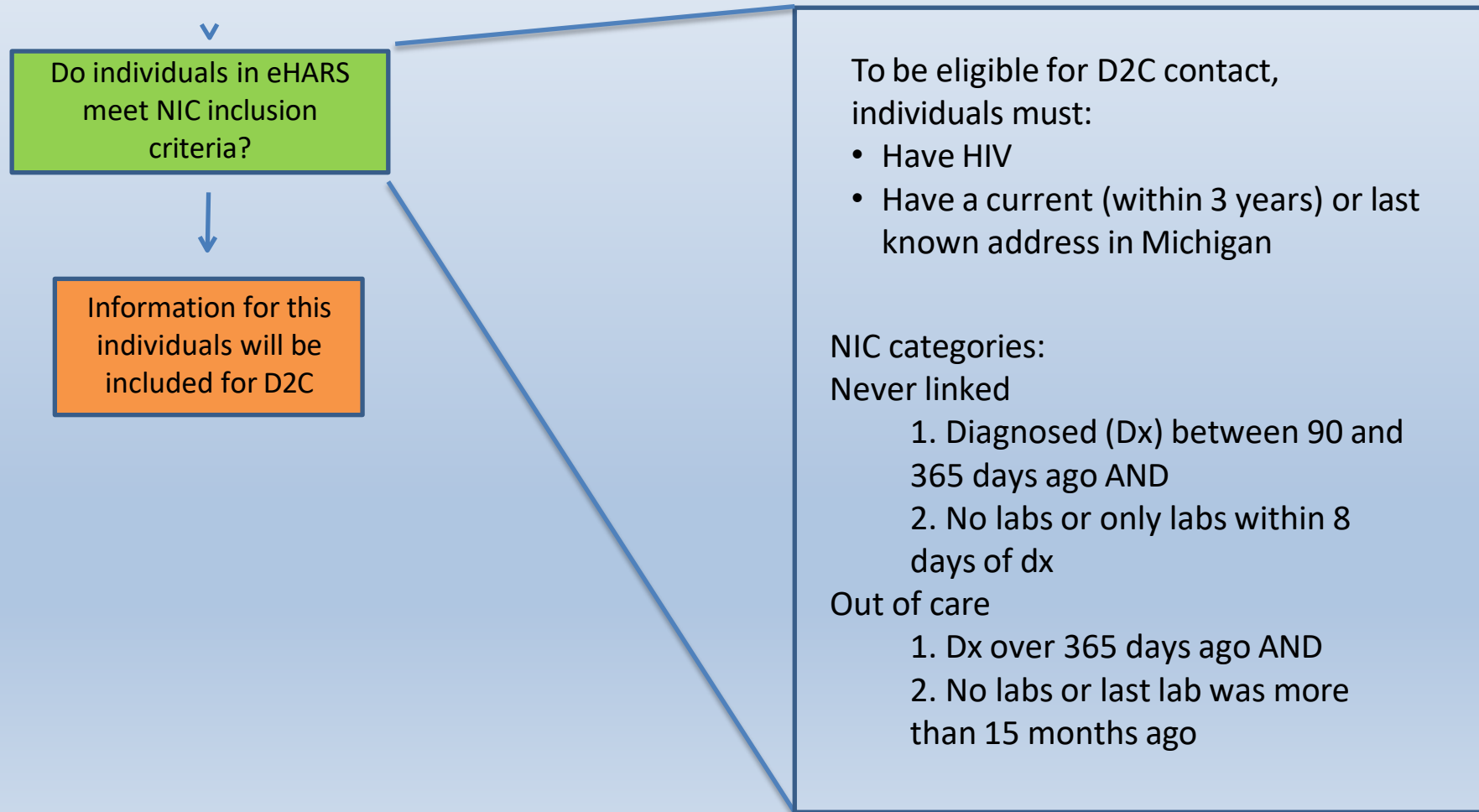
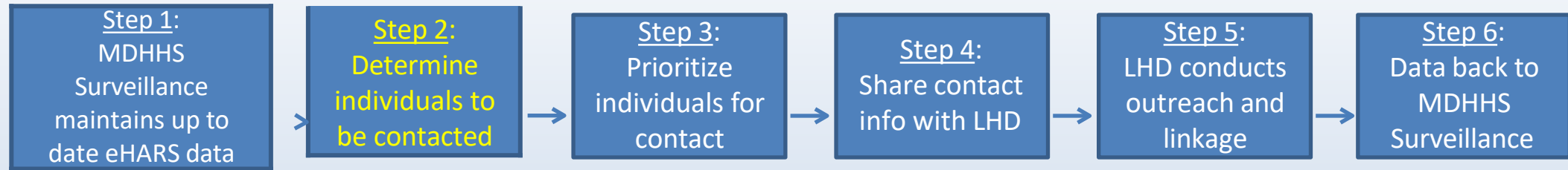
## Not in Care includes individuals out of care

- Diagnosed over 365 days ago
- AND
- No CD4, viral load or genotype in previous 15 months

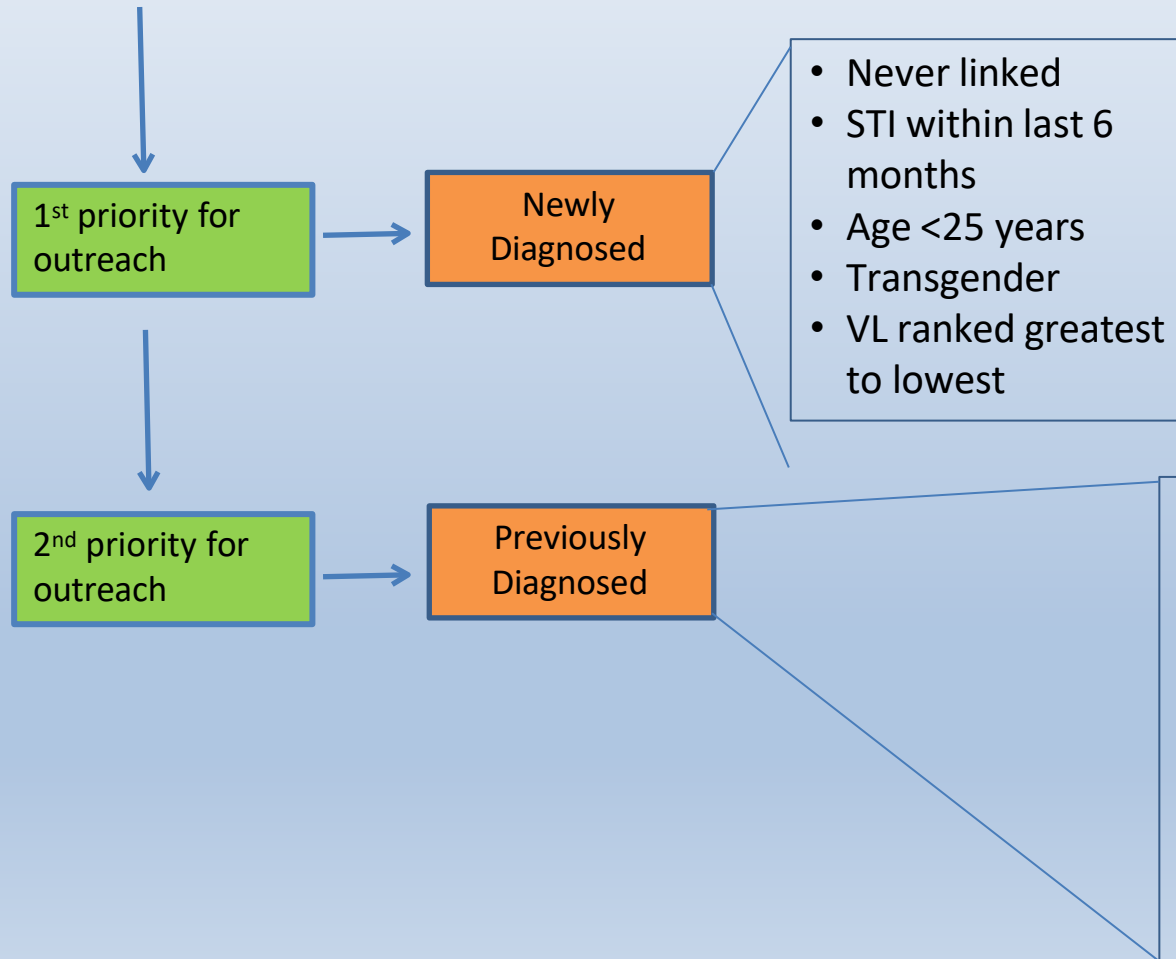
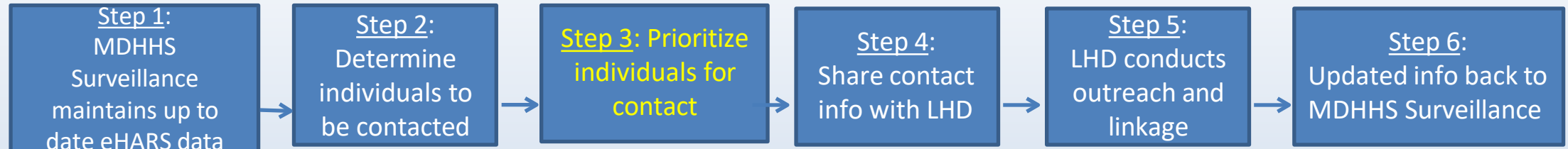
# MDHHS Surveillance Maintains Up-to-date eHARS data



# Determine who will be contacted for D2C

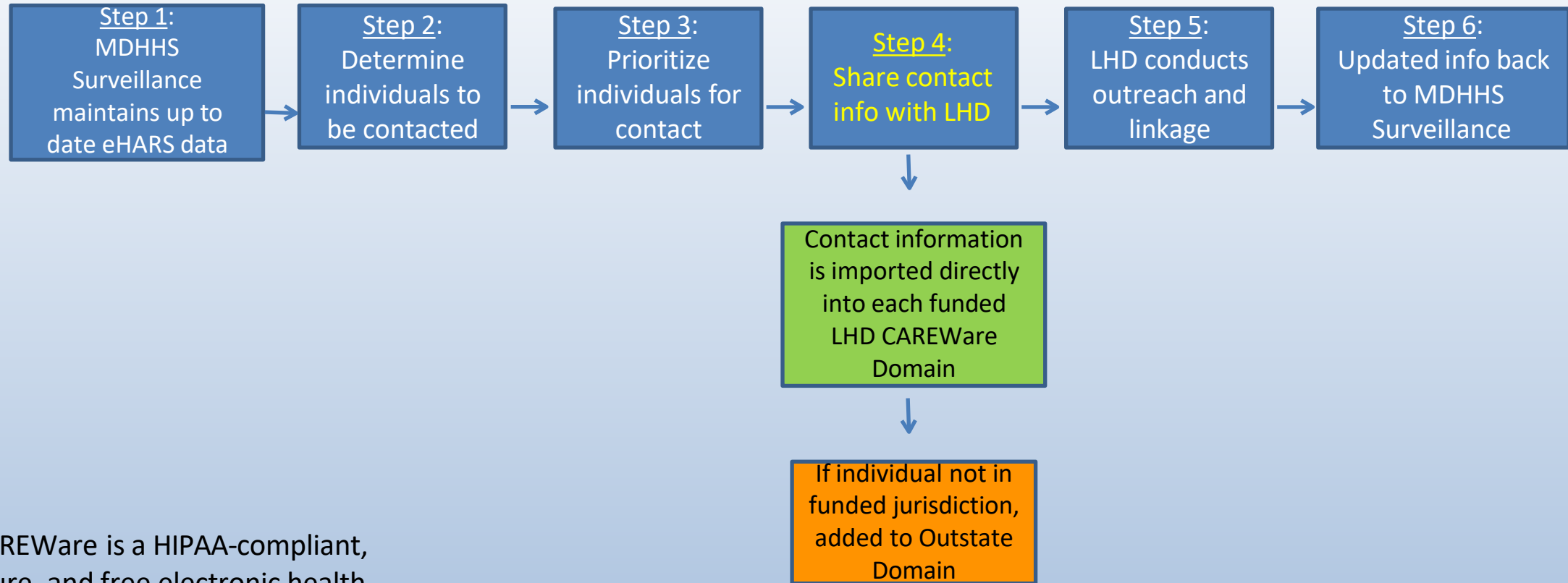


# Prioritize individuals for contact



Note: These priorities were developed by MDHHS, the Detroit Health Department D2C pilot (Link-Up Detroit), and after consulting with consumers (people living with HIV). Prioritizing individuals for contact in this way is meant to maximize potential for improving both individual health and minimizing HIV transmission in our communities by increasing viral suppression

# Share contact info with LHD

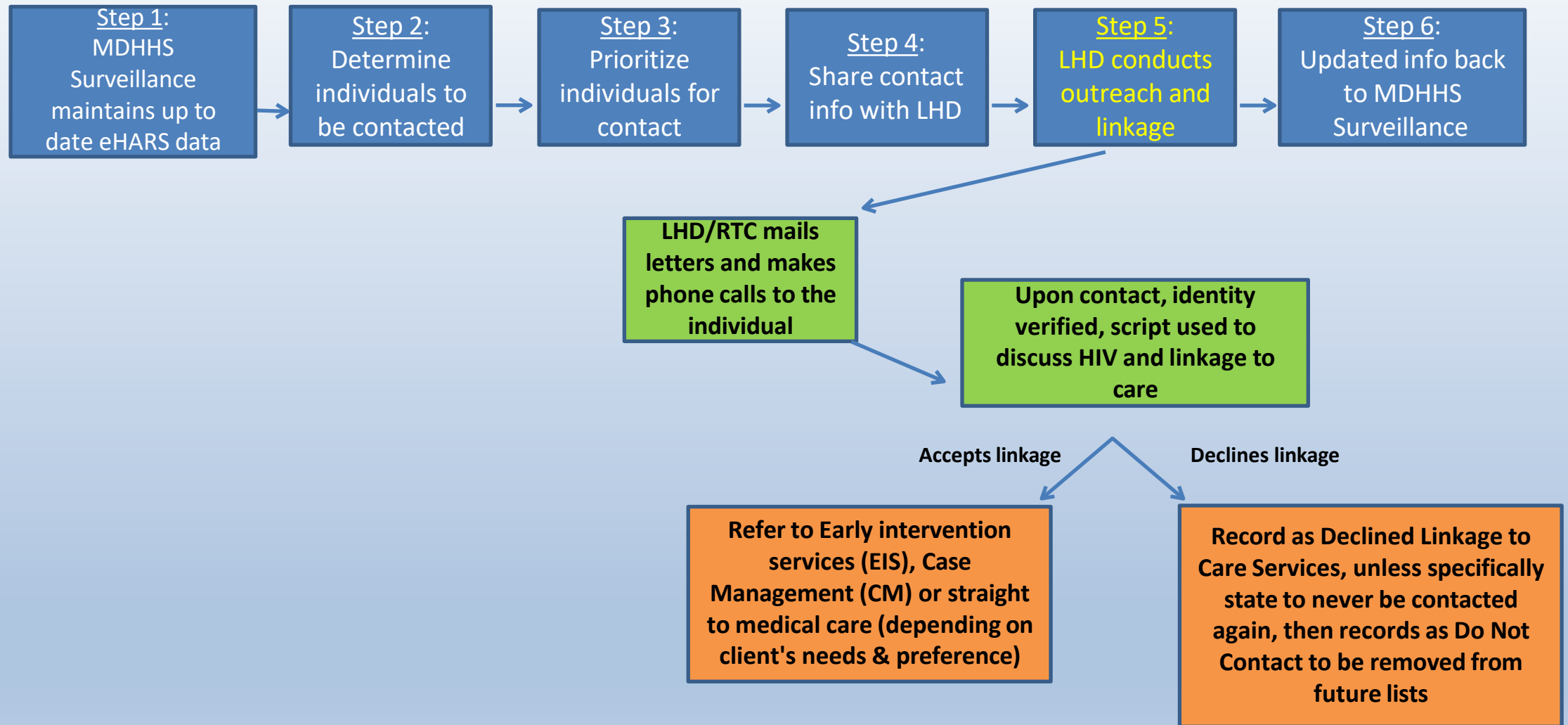


\*CAREWare is a HIPAA-compliant, secure, and free electronic health and social support services information system for Ryan White HIV/AIDS Program grant recipients and their providers. CAREWare was developed by HRSA's HIV/AIDS Bureau and first released in 2000.

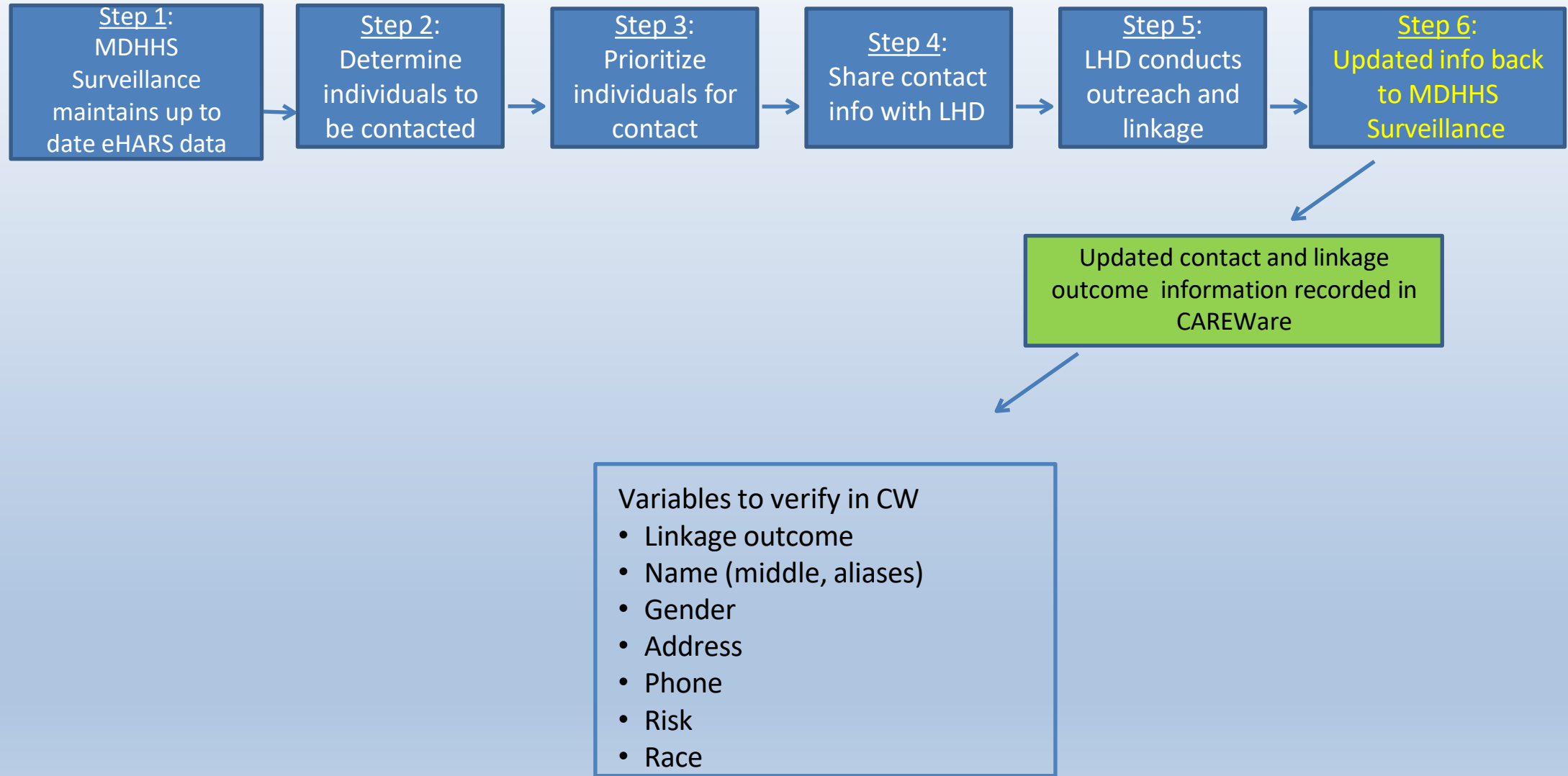
\*New Centralized process starting 10/01/2022 where most D2C will be done internally by MDHHS Staff



# LHD Conducts Outreach and Linkage



# Updated info sent back to MDHHS Surveillance



# Evaluation

- Built into every step of the model – CAREWare will be used to track every contact made with each person, including their disposition
- Pilot program in Detroit developed extensive evaluation plan – with several data points to make sure progress is tracked, and determine if this program is effective
- Information will be shared back with the community, so you are aware of our progress

# Contact Information

Jason Johnson

Return To Care Unit Manager  
Return To Care Unit  
HIV Care Section  
Division of HIV & STI Programs  
Michigan Department of Health and Human Services

517-899-6084

[johnsonj122@michigan.gov](mailto:johnsonj122@michigan.gov)

[MDHHS-LinkUpMI@Michigan.gov](mailto:MDHHS-LinkUpMI@Michigan.gov)